

For Research Use Only

# CoraLite® Plus 488-conjugated FAM127B Recombinant antibody

Catalog Number: CL488-83862-2



## Basic Information

Catalog Number:

CL488-83862-2

Size:

1000 µg/ml

Source:

Rabbit

Isotype:

IgG

Immunogen Catalog Number:

AG13930

GenBank Accession Number:

BC000393

GeneID (NCBI):

26071

UNIPROT ID:

Q9BWD3

Full Name:

family with sequence similarity 127,

member B

Calculated MW:

113 aa, 13 kDa

Purification Method:

Protein A purification

CloneNo.:

240716B7

Recommended Dilutions:

IF/ICC 1:50-1:500

Excitation/Emission maxima

wavelengths:

493 nm / 522 nm

## Applications

Tested Applications:

IF/ICC

Species Specificity:

human

Positive Controls:

IF/ICC : HepG2 cells,

## Background Information

The FAM127 family currently has three members, namely FAM127A (also called RTL8C and CXX1), FAM127B (also called CXX1B and RTL8A), and FAM127C (also called RTL8B and CXX1C). They are located on chromosomes and their functions are unknown. All three are composed of 113 amino acids and have extremely high sequence similarity. The immunogen of this antibody has a sequence similarity of more than 95% with members of the FAM127 family.

## Storage

Storage:

Store at -20°C. Avoid exposure to light. Stable for one year after shipment.

Storage Buffer:

PBS with 50% Glycerol, 0.05% Proclin300, 0.5% BSA, pH 7.3.

Aliquoting is unnecessary for -20°C storage

For technical support and original validation data for this product please contact:

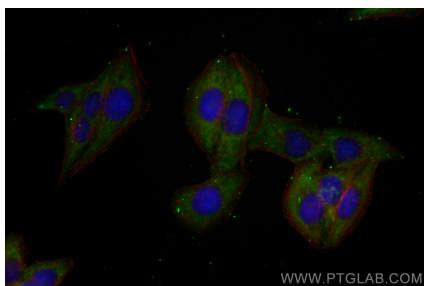
T: 4006900926

E: [Proteintech-CN@ptglab.com](mailto:Proteintech-CN@ptglab.com)

W: [ptgcn.com](http://ptgcn.com)

This product is exclusively available under Proteintech Group brand and is not available to purchase from any other manufacturer.

## Selected Validation Data



Immunofluorescent analysis of (-20°C Ethanol)  
fixed HepG2 cells using CoraLite® Plus 488  
FAM127B antibody (CL488-83862-2, Clone:  
240716B7 ) at dilution of 1:200.