

For Research Use Only

# CoraLite® Plus 488-conjugated CYFIP2 Recombinant antibody

Catalog Number: CL488-83845-3



## Basic Information

Catalog Number:

CL488-83845-3

Concentration:

Source:

Rabbit

Isotype:

IgG

Immunogen Catalog Number:

AG8749

GenBank Accession Number:

BC011762

GeneID (NCBI):

26999

UNIPROT ID:

Q96F07

Full Name:

cytoplasmic FMR1 interacting protein

2

Calculated MW:

148 kDa

Purification Method:

Protein A purification

CloneNo.:

240909E3

Recommended Dilutions:

IF/ICC: 1:50-1:500

Excitation/Emission maxima

wavelengths:

493 nm / 522 nm

## Applications

Tested Applications:

IF/ICC

Species Specificity:

human

Positive Controls:

IF/ICC : Jurkat cells,

## Background Information

CYFIP1/2 belongs to the CYFIP family and is involved in T-cell adhesion and p53-dependent induction of apoptosis. CYFIP1 contains 1,253 amino acids and shares 88% sequence identity with CYFIP2. CYFIP1 and CYFIP2 are members of a highly conserved protein family and share approximately 99% sequence identity with their mouse orthologs. CYFIP1 has been shown to interact with the small GTPase RAC1, which is implicated in development and maintenance of neuronal structures. Consistent with FMRP and RAC1 localization in dendritic fine structures, CYFIP1/2 are present in synaptosomal extracts. This antibody can recognize both CYFIP1 and CYFIP2.

## Storage

Storage:

Store at -20°C. Avoid exposure to light. Stable for one year after shipment.

Storage Buffer:

PBS with 50% glycerol, 0.05% Proclin300, 0.5% BSA, pH7.3

Aliquoting is unnecessary for -20°C storage

For technical support and original validation data for this product please contact:

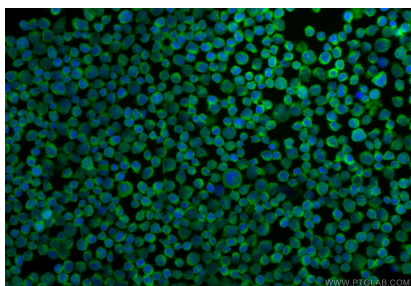
T: 4006900926

E: [Proteintech-CN@ptglab.com](mailto:Proteintech-CN@ptglab.com)

W: [ptgcn.com](http://ptgcn.com)

This product is exclusively available under Proteintech Group brand and is not available to purchase from any other manufacturer.

## Selected Validation Data



Immunofluorescent analysis of (4% PFA) fixed Jurkat cells using CoraLite® Plus 488 CYFIP2 antibody (CL488-83845-3, Clone: 240909E3 ) at dilution of 1:200.