

For Research Use Only

CoraLite® Plus 488-conjugated CEBPB Recombinant antibody

Catalog Number: CL488-83791-6



Basic Information

Catalog Number:

CL488-83791-6

Size:

1000 µg/ml

Source:

Rabbit

Isotype:

IgG

Immunogen Catalog Number:

AG20073

GenBank Accession Number:

BC007538

GeneID (NCBI):

1051

UNIPROT ID:

P17676

Full Name:

CCAAT/enhancer binding protein
(C/EBP), beta

Calculated MW:

345 aa, 36 kDa

Observed MW:

42 kDa, 46 kDa

Purification Method:

Protein A purification

CloneNo.:

240836G6

Recommended Dilutions:

IF/ICC 1:50-1:500

Excitation/Emission maxima
wavelengths:

493 nm / 522 nm

Applications

Tested Applications:

IF/ICC

Species Specificity:

human

Positive Controls:

IF/ICC : HepG2 cells,

Background Information

CCAAT/enhancer-binding protein beta (CEBPB), also known as LAP, is a important transcriptional activator in the regulation of genes involved in immune and inflammatory responses. It specifically binds to an IL-1 response element in the IL-6 gene. CEBPb mRNAs possess alternative translation-initiation codons, which result in the formation of truncated forms of the protein. Three variants of CEBPBs have been detected: a 46 kDa full-length liver-enriched transcription-activating protein (LAP1), a 42 kDa LAP2 and a 20 kDa liver-enriched transcription-inhibitory protein (LIP). (PMID:18820298).

Storage

Storage:

Store at -20°C. Avoid exposure to light. Stable for one year after shipment.

Storage Buffer:

PBS with 50% Glycerol, 0.05% Proclin300, 0.5% BSA, pH 7.3.

Aliquoting is unnecessary for -20°C storage

For technical support and original validation data for this product please contact:

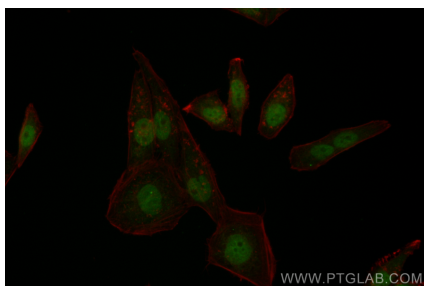
T: 4006900926

E: Proteintech-CN@ptglab.com

W: ptgcn.com

This product is exclusively available under Proteintech Group brand and is not available to purchase from any other manufacturer.

Selected Validation Data



Immunofluorescent analysis of (4% PFA) fixed HepG2 cells using CoraLite® Plus 488 CEBPB antibody (CL488-83791-6, Clone: 240836G6) at dilution of 1:200.