

For Research Use Only

CoraLite® Plus 488-conjugated Islet 1 Recombinant antibody

Catalog Number: CL488-83784-4



Basic Information

Catalog Number:

CL488-83784-4

Concentration:

1000 µg/ml

Source:

Rabbit

Isotype:

IgG

Immunogen Catalog Number:

AG33541

GenBank Accession Number:

BC031213

GeneID (NCBI):

3670

UNIPROT ID:

P61371

Full Name:

ISL LIM homeobox 1

Calculated MW:

39 kDa

Observed MW:

39-45 kDa

Purification Method:

Protein A purification

CloneNo.:

240833D7

Recommended Dilutions:

IF/ICC 1:50-1:500

Excitation/Emission maxima wavelengths:

493 nm / 522 nm

Applications

Tested Applications:

IF/ICC

Species Specificity:

human

Positive Controls:

IF/ICC : SH-SY5Y cells,

Background Information

ISL1 belongs to the LIM homeodomain transcription factor family that binds to the enhancer region of the INS gene. It plays a pivotal role in cardiogenesis, and lacking ISL1 expression results in growth arrest or displays profound defects in heart development, including atria, ventricle, and the inflow and outflow tracts. Ubiquitinated probably by WWP1 E3 ubiquitin ligase; ubiquitination is followed by protein degradation.

Storage

Storage:

Store at -20°C. Avoid exposure to light. Stable for one year after shipment.

Storage Buffer:

PBS with 50% Glycerol, 0.05% Proclin300, 0.5% BSA, pH 7.3.

Aliquoting is unnecessary for -20°C storage

For technical support and original validation data for this product please contact:

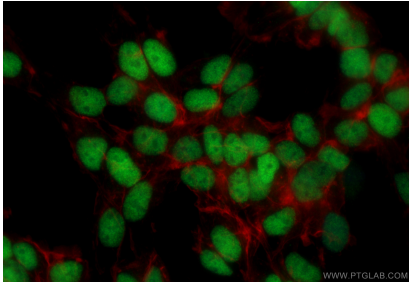
T: 4006900926

E: Proteintech-CN@ptglab.com

W: ptgcn.com

This product is exclusively available under Proteintech Group brand and is not available to purchase from any other manufacturer.

Selected Validation Data



Immunofluorescent analysis of (4% PFA) fixed SH-SY5Y cells using CoraLite® Plus 488 Islet 1 antibody (CL488-83784-4, Clone: 240833D7) at dilution of 1:200, CL594-Phalloidin (red).