

For Research Use Only

CoraLite® Plus 488-conjugated BCL9 Recombinant antibody

Catalog Number: CL488-83760-3



Basic Information

Catalog Number:

CL488-83760-3

Concentration:

1000 µg/ml

Source:

Rabbit

Isotype:

IgG

Immunogen Catalog Number:

AG19158

GenBank Accession Number:

BC116451

GeneID (NCBI):

607

UNIPROT ID:

O00512

Full Name:

B-cell CLL/lymphoma 9

Calculated MW:

1426 aa, 149 kDa

Purification Method:

Protein A purification

CloneNo.:

240682A9

Recommended Dilutions:

IF/ICC 1:50-1:500

Excitation/Emission maxima
wavelengths:

493 nm / 522 nm

Applications

Tested Applications:

IF/ICC

Species Specificity:

human

Positive Controls:

IF/ICC : HeLa cells,

Background Information

BCL9 is associated with B-cell acute lymphoblastic leukemia. It may be a target of translocation in B-cell malignancies with abnormalities of 1q21. Its function is unknown. The overexpression of BCL9 may be of pathogenic significance in B-cell malignancies.

Storage

Storage:

Store at -20°C. Avoid exposure to light. Stable for one year after shipment.

Storage Buffer:

PBS with 50% Glycerol, 0.05% Proclin300, 0.5% BSA, pH 7.3.

Aliquoting is unnecessary for -20°C storage

For technical support and original validation data for this product please contact:

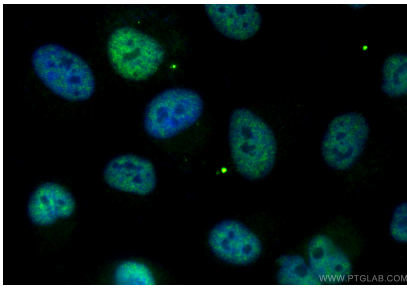
T: 4006900926

E: Proteintech-CN@ptglab.com

W: ptgcn.com

This product is exclusively available under Proteintech Group brand and is not available to purchase from any other manufacturer.

Selected Validation Data



Immunofluorescent analysis of (4% PFA) fixed HeLa cells using CoraLite® Plus 488 BCL9 antibody (CL488-83760-3, Clone: 240682A9) at dilution of 1:200.