

For Research Use Only

# CoraLite® Plus 488-conjugated ASGR1 Recombinant antibody

Catalog Number: CL488-83691-3



## Basic Information

<b>Catalog Number:</b> CL488-83691-3	<b>GenBank Accession Number:</b> NM_001671.4	<b>Purification Method:</b> Protein A purification
<b>Concentration:</b> 1000 ug/ml	<b>GeneID (NCBI):</b> 432	<b>CloneNo.:</b> 240672C4
<b>Source:</b> Rabbit	<b>UNIPROT ID:</b> P07306-1	<b>Recommended Dilutions:</b> IF-P: 1:50-1:500
<b>Isotype:</b> IgG	<b>Full Name:</b> asialoglycoprotein receptor 1	<b>Excitation/Emission maxima wavelengths:</b> 493 nm / 522 nm
<b>Immunogen Catalog Number:</b> EG0946	<b>Calculated MW:</b> 33 kDa	
	<b>Observed MW:</b> 42-46 kDa	

## Applications

<b>Tested Applications:</b> IF-P	<b>Positive Controls:</b> IF-P: rat liver tissue,
<b>Species Specificity:</b> human, mouse, rat	

## Background Information

Asialoglycoprotein receptor (ASGPR), also known as the hepatic galactose/N-acetylglucosamine (GlcNAc) receptor or Ashwell receptor, is a C-type lectin expressed exclusively in hepatic parenchymal cells. ASGPR consists of two subunits, a major subunit (ASGR1, HL-1) and a minor subunit (ASGR2, HL-2), and specifically recognizes terminal  $\beta$ -linked galactose or GlcNAc on circulating glycoproteins or cells. This receptor plays a critical role in serum glycoprotein homeostasis by mediating the endocytosis and lysosomal degradation of glycoproteins that contain terminal galactose or GlcNAc residues. ASGPR may facilitate hepatic infection by multiple viruses including hepatitis B, and is also a target for liver-specific drug delivery.

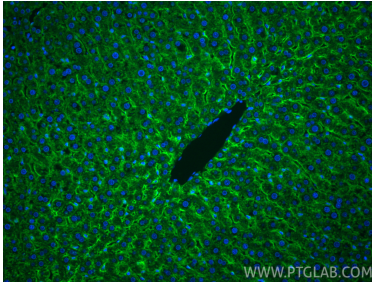
## Storage

**Storage:**  
Store at -20°C. Avoid exposure to light. Stable for one year after shipment.  
**Storage Buffer:**  
PBS with 50% glycerol, 0.05% Proclin300, 0.5% BSA, pH7.3  
**Aliquoting is unnecessary for -20°C storage**

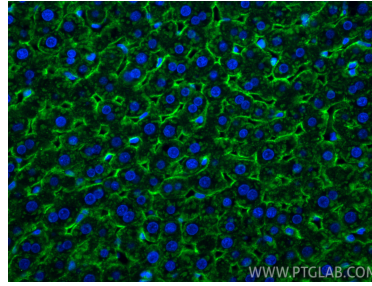
For technical support and original validation data for this product please contact:  
T: 4006900926 E: Proteintech-CN@ptglab.com W: ptgcn.com

This product is exclusively available under Proteintech Group brand and is not available to purchase from any other manufacturer.

## Selected Validation Data



Immunofluorescent analysis of (4% PFA) fixed paraffin-embedded rat liver tissue using Coralite® Plus 488 ASGR1 antibody (CL488-83691-3, Clone: 240672C4) at dilution of 1:200. Heat mediated antigen retrieval with Tris-EDTA buffer (pH 9.0).



Immunofluorescent analysis of (4% PFA) fixed paraffin-embedded rat liver tissue using Coralite® Plus 488 ASGR1 antibody (CL488-83691-3, Clone: 240672C4) at dilution of 1:200. Heat mediated antigen retrieval with Tris-EDTA buffer (pH 9.0).