

For Research Use Only

# CoraLite® Plus 488-conjugated LPXN Recombinant antibody

Catalog Number: CL488-83657-5



## Basic Information

Catalog Number:

CL488-83657-5

Concentration:

1000 µg/ml

Source:

Rabbit

Isotype:

IgG

Immunogen Catalog Number:

AG34956

GenBank Accession Number:

BC019035

GeneID (NCBI):

9404

UNIPROT ID:

O60711

Full Name:

leupaxin

Calculated MW:

43 kDa

Observed MW:

45 kDa

Purification Method:

Protein A purification

CloneNo.:

240483G10

Recommended Dilutions:

IF/ICC 1:200-1:800

Excitation/Emission maxima wavelengths:

493 nm / 522 nm

## Applications

Tested Applications:

IF/ICC

Species Specificity:

human

Positive Controls:

IF/ICC : PC-3 cells,

## Background Information

LPXN, also known as Leupaxin, LDPL, belongs to the paxillin family. LPXN contributes to the regulation of cell adhesion, spreading, and cell migration and acts as a negative regulator in integrin-mediated cell adhesion events (PMID: 20543562). LPXN has four leucine-rich LD-motifs in the N-terminus and four LIM domains in the C-terminus. It may function in cell type-specific signaling by associating with PYK2, a member of the focal adhesion kinase family (PMID: 9565592). Studies in breast cancer implicate LPXN is involved in the regulation of ER action as a co-factor (PMID: 25955236). LPXN is expressed in prostate cancer cells and its expression intensity is directly linked to PCa progression (PMID: 18451096).

## Storage

Storage:

Store at -20°C. Avoid exposure to light. Stable for one year after shipment.

Storage Buffer:

PBS with 50% Glycerol, 0.05% Proclin300, 0.5% BSA, pH 7.3.

Aliquoting is unnecessary for -20°C storage

For technical support and original validation data for this product please contact:

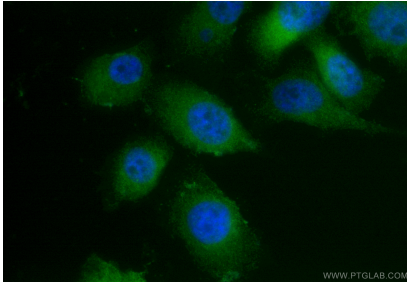
T: 4006900926

E: [Proteintech-CN@ptglab.com](mailto:Proteintech-CN@ptglab.com)

W: [ptgcn.com](http://ptgcn.com)

This product is exclusively available under Proteintech Group brand and is not available to purchase from any other manufacturer.

## Selected Validation Data



Immunofluorescent analysis of (4% PFA) fixed PC-3 cells using CoraLite® Plus 488 LPXN antibody (CL488-83657-5, Clone: 240483G10 ) at dilution of 1:400.