

For Research Use Only

CoraLite® Plus 488-conjugated RCN1 Recombinant antibody

Catalog Number: CL488-83638-3



Basic Information

Catalog Number:

CL488-83638-3

Concentration:

1000 µg/ml

Source:

Rabbit

Isotype:

IgG

Immunogen Catalog Number:

AG13256

GenBank Accession Number:

BC010120

GeneID (NCBI):

5954

UNIPROT ID:

Q15293

Full Name:

reticulocalbin 1, EF-hand calcium binding domain

Calculated MW:

39 kDa

Observed MW:

44-46 kDa

Purification Method:

Protein A purification

CloneNo.:

240473E9

Recommended Dilutions:

IF/ICC 1:50-1:500

Excitation/Emission maxima wavelengths:

493 nm / 522 nm

Applications

Tested Applications:

IF/ICC

Species Specificity:

human

Positive Controls:

IF/ICC : U2OS cells,

Background Information

Reticulocalbin-1 (RCN1) belongs to the CREC family. Reticulocalbin - 1, an endoplasmic reticulum protein, plays a crucial role in calcium homeostasis and inhibits ER stress - induced apoptosis (PMID: 28319095). Its main functions include maintaining intracellular homeostasis and regulating cell proliferation and apoptosis, and it plays an important role in the development of various tumours (PMID: 38057406). RCN1 is expressed aberrantly and at a high level in various tumors, including acute myeloid leukemia (AML) (PMID: 37746742). In multiple cancers, such as glioblastoma, non - small cell lung cancer, renal cell carcinoma, hepatocellular carcinoma, and oral squamous cell carcinoma, the overexpression of RCN1 has been observed indicating its involvement in tumorigenesis and invasion (PMID: 30172915, PMID: 34722631).

Storage

Storage:

Store at -20°C. Avoid exposure to light. Stable for one year after shipment.

Storage Buffer:

PBS with 50% glycerol, 0.05% Proclin300, 0.5% BSA, pH7.3

Aliquoting is unnecessary for -20°C storage

For technical support and original validation data for this product please contact:

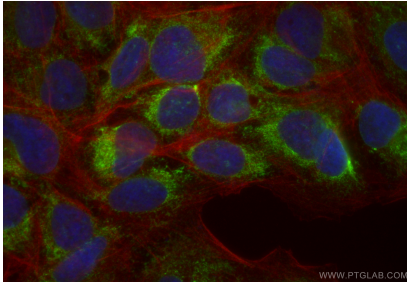
T: 4006900926

E: Proteintech-CN@ptglab.com

W: ptgcn.com

This product is exclusively available under Proteintech Group brand and is not available to purchase from any other manufacturer.

Selected Validation Data



Immunofluorescent analysis of (4% PFA) fixed U2OS cells using CoraLite® Plus 488 RCN1 antibody (CL488-83638-3, Clone: 240473E9) at dilution of 1:200, CL594-Phalloidin (red).