

For Research Use Only

CoraLite® Plus 488-conjugated ZBTB7A Recombinant antibody

Catalog Number: CL488-83616-5

Featured Product



Basic Information

Catalog Number:

CL488-83616-5

Concentration:

1000 ug/ml

Source:

Rabbit

Isotype:

IgG

GenBank Accession Number:

BC113511

GeneID (NCBI):

51341

UNIPROT ID:

O95365

Full Name:

zinc finger and BTB domain
containing 7A

Calculated MW:

61 kDa

Observed MW:

61 kDa, 75-80 kDa

Purification Method:

Protein A purification

CloneNo.:

240555A6

Recommended Dilutions:

IF/ICC 1:50-1:500

Excitation/Emission maxima
wavelengths:

493 nm / 522 nm

Applications

Tested Applications:

IF/ICC

Species Specificity:

human

Positive Controls:

IF/ICC : HepG2 cells,

Background Information

ZBTB7A, also named as LRF, FBI1, FBI-1, pokemon, ZBTB7, ZNF857A and DKFZp547O146, a member of the POK (POZ and Krüppel) family of transcription factors, plays a role in differentiation, oncogenesis, and adipogenesis (PMID: 35798238). ZBTB7A is involved in the instruction of early lymphoid progenitors to develop into B lineage by repressing T-cell instructive Notch signals. ZBTB7A is widely expressed in normal thymus and it is aberrantly overexpressed in human cancers (PMID: 28942243). ZBTB7A has 10 potential sumoylation sites located at lysine 61, 354, 371, 379, 383, 396, 486, 487, 536 and 539 (PMID: 20471975, 19471103). ZBTB7A has a predicted molecular weight of 61 kDa and the 75-80-kDa band could be the sumoylated form.

Storage

Storage:

Store at -20°C. Avoid exposure to light. Stable for one year after shipment.

Storage Buffer:

PBS with 50% glycerol, 0.05% Proclin300, 0.5% BSA, pH7.3

Aliquoting is unnecessary for -20°C storage

For technical support and original validation data for this product please contact:

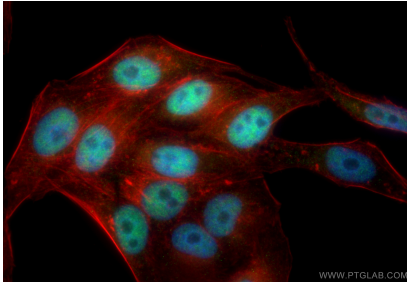
T: 4006900926

E: Proteintech-CN@ptglab.com

W: ptgcn.com

This product is exclusively available under Proteintech Group brand and is not available to purchase from any other manufacturer.

Selected Validation Data



Immunofluorescent analysis of (4% PFA) fixed HepG2 cells using CoraLite® Plus 488 ZBTB7A antibody (CL488-83616-5, Clone: 240555A6) at dilution of 1:200, CL594-Phalloidin (red).