

For Research Use Only

CoraLite® Plus 488-conjugated SYNPO2L Recombinant antibody

Catalog Number: CL488-83532-3



Basic Information

Catalog Number:

CL488-83532-3

Size:

1000 µg/ml

Source:

Rabbit

Isotype:

IgG

Immunogen Catalog Number:

AG34027

GenBank Accession Number:

BC142635

GeneID (NCBI):

79933

UNIPROT ID:

Q9H987

Full Name:

synaptopodin 2-like

Calculated MW:

977 aa, 102 kDa

Purification Method:

Protein A purification

CloneNo.:

240523F12

Recommended Dilutions:

IF/ICC 1:50-1:500

Excitation/Emission maxima
wavelengths:

493 nm / 522 nm

Applications

Tested Applications:

IF/ICC

Species Specificity:

human

Positive Controls:

IF/ICC : HepG2 cells,

Background Information

SYNPO2L belongs to the synaptopodin family and is an actin-associated protein that may play a role in modulating actin-based shape. SYNPO2L is involved in the positive regulation of Rho protein signal transduction and the positive regulation of stress fiber assembly. Loss-of-function variants in the SYNPO2L gene are associated with atrial fibrillation (PMID: 33768119).

Storage

Storage:

Store at -20°C. Avoid exposure to light. Stable for one year after shipment.

Storage Buffer:

PBS with 50% Glycerol, 0.05% Proclin300, 0.5% BSA, pH 7.3.

Aliquoting is unnecessary for -20°C storage

For technical support and original validation data for this product please contact:

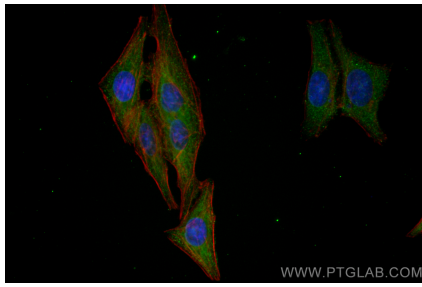
T: 4006900926

E: Proteintech-CN@ptglab.com

W: ptgcn.com

This product is exclusively available under Proteintech Group brand and is not available to purchase from any other manufacturer.

Selected Validation Data



Immunofluorescent analysis of (-20°C Ethanol)
fixed HepG2 cells using CoraLite® Plus 488
SYNPO2L antibody (CL488-83532-3, Clone:
240523F12) at dilution of 1:200.