

For Research Use Only

CoraLite® Plus 488-conjugated MDC1 Recombinant antibody

Catalog Number: CL488-83496



Basic Information

Catalog Number:

CL488-83496

Concentration:

1000 µg/ml

Source:

Rabbit

Isotype:

IgG

Immunogen Catalog Number:

AG20135

GenBank Accession Number:

BC152556

GeneID (NCBI):

9656

UNIPROT ID:

Q14676

Full Name:

mediator of DNA damage checkpoint

1

Calculated MW:

2089 aa, 227 kDa

Observed MW:

260-320 kDa

Purification Method:

Protein A purification

CloneNo.:

240469D5

Recommended Dilutions:

IF/ICC: 1:50-1:500

FC (Intra): 0.40 µg per 10⁶ cells in a
100 µl suspension

Excitation/Emission maxima
wavelengths:

493 nm / 522 nm

Applications

Tested Applications:

IF/ICC, FC (Intra)

Species Specificity:

human

Positive Controls:

IF/ICC : HeLa cells,

FC (Intra) : HeLa cells,

Background Information

MDC1, also named as KIAA0170 or NFB1, is a 2089 amino acid protein, which contains two BRCT domains and one FHA domain. MDC1 localizes in the nucleus and is highly expressed in testis. MDC1 is required for checkpoint mediated cell cycle arrest in response to DNA damage within both the S phase and G2/M phases of the cell cycle. MDC1 may serve as a scaffold for the recruitment of DNA repair and signal transduction proteins to discrete foci of DNA damage marked.

Storage

Storage:

Store at -20°C. Avoid exposure to light. Stable for one year after shipment.

Storage Buffer:

PBS with 50% glycerol, 0.05% Proclin300, 0.5% BSA, pH7.3

Aliquoting is unnecessary for -20°C storage

For technical support and original validation data for this product please contact:

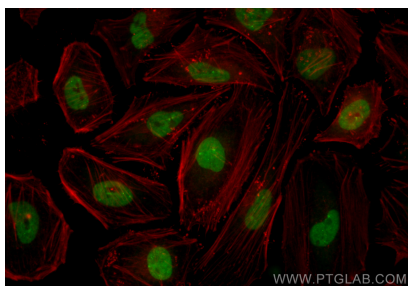
T: 4006900926

E: Proteintech-CN@ptglab.com

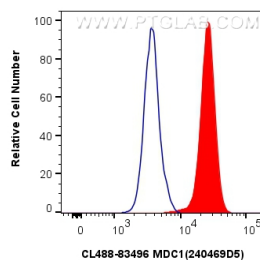
W: ptgcn.com

This product is exclusively available under Proteintech Group brand and is not available to purchase from any other manufacturer.

Selected Validation Data



Immunofluorescent analysis of (4% PFA) fixed HeLa cells using CoraLite® Plus 488 MDC1 antibody (CL488-83496, Clone: 240469D5) at dilution of 1:200.



1x10⁶ HeLa cells were intracellularly stained with 0.4 ug CoraLite® Plus 488-conjugated MDC1 Recombinant antibody (CL488-83496, Clone:240469D5)(red), or 0.4 ug CoraLite® Plus 488-conjugated Rabbit IgG control Rabbit PolyAb (CL488-30000) (blue). Cells were fixed and permeabilized with Transcription Factor Staining Buffer Kit (PF00011).