

For Research Use Only

# CoraLite® Plus 488-conjugated CD206 Recombinant monoclonal antibody

Catalog Number: CL488-83485



## Basic Information

Catalog Number: CL488-83485	GenBank Accession Number: NM_008625.2	Purification Method: Protein A purification
Source: Rabbit	GeneID (NCBI): 17533	CloneNo.: 240344B9
Isotype: IgG	UNIPROT ID: Q2HZ94	Recommended Dilutions: IF-P: 1:50-1:500
Immunogen Catalog Number: EG0790	Full Name: mannose receptor, C type 1	Excitation/Emission maxima wavelengths: 493 nm / 522 nm
	Calculated MW: 165 kDa	
	Observed MW: 200 kDa	

## Applications

Tested Applications: IF-P	Positive Controls: IF-P: mouse spleen tissue,
Species Specificity: mouse, rat	

## Background Information

CD206, also named as MMR, CLEC13D and MRC1, is a type I membrane receptor that mediates the endocytosis of glycoproteins by macrophages. CD206 has been shown to bind high-mannose structures on the surface of potentially pathogenic viruses, bacteria, and fungi so that they can be neutralized by phagocytic engulfment. CD206 is a transmembrane protein which contains 5 domains: an amino-terminal cysteine-rich region, a fibronectin type II repeat, a series of eight tandem lectin-like carbohydrate recognition domains (responsible for the recognition of mannose and fucose), a transmembrane domain, and an intracellular carboxy-terminal tail. It is expressed on most tissue macrophages, in vitro derived dendritic cells, lymphatic and sinusoidal endothelia.

## Storage

**Storage:**  
Store at -20°C. Avoid exposure to light. Stable for one year after shipment.  
**Storage Buffer:**  
PBS with 50% glycerol, 0.05% Proclin300, 0.5% BSA, pH7.3  
Aliquoting is unnecessary for -20°C storage

For technical support and original validation data for this product please contact:

T: 4006900926

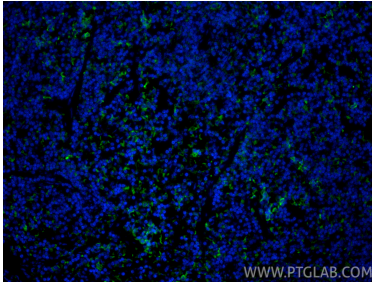
E: [Proteintech-CN@ptglab.com](mailto:Proteintech-CN@ptglab.com)

W: [ptgcn.com](http://ptgcn.com)

This product is exclusively available under Proteintech Group brand and is not available to purchase from any other manufacturer.

---

## Selected Validation Data



Immunofluorescent analysis of (4% PFA) fixed paraffin-embedded mouse spleen tissue using CoraLite® Plus 488 CD206 antibody (CL488-83485, Clone: 240344B9 ) at dilution of 1:200. Heat mediated antigen retrieval with Tris-EDTA buffer (pH 9.0).