

CoraLite® Plus 488-conjugated Osteopontin Recombinant monoclonal antibody

Catalog Number: **CL488-83341**

Basic Information

Catalog Number: CL488-83341	GenBank Accession Number: BC007016	Purification Method: Protein A purification
Source: Rabbit	GeneID (NCBI): 6696	CloneNo.: 240206A2
Isotype: IgG	UNIPROT ID: P10451-5	Recommended Dilutions: IF/ICC: 1:50-1:500
Immunogen Catalog Number: EG0754	Full Name: secreted phosphoprotein 1	Excitation/Emission maxima wavelengths: 493 nm / 522 nm
	Calculated MW: 314 aa, 35 kDa	
	Observed MW: 60-66 kDa	

Applications

Tested Applications: IF/ICC	Positive Controls: IF/ICC : HepG2 cells,
Species Specificity: human, mouse	

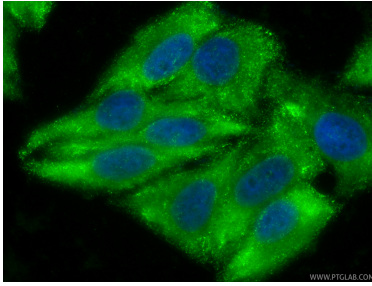
Background Information

Osteopontin (OPN), also known as SPP1, is a secreted glycoprophosphoprotein that belongs to the small integrin-binding ligand N-linked glycoprotein (SIBLING) family. Originally isolated from bone, OPN has been found in kidneys, vascular tissues, biological fluids, and various tumor tissues (PMID: 15138464; 16406521). OPN can interact with CD44 and integrins and regulate diverse biological processes. It has a multifaceted role in bone development and remodeling, and is also involved in the inflammatory and immune response, oncogenesis and cancer progression. The very acidic nature of OPN, as well as the presence of variable posttranslational modifications, has led to anomalous migration in SDS-polyacrylamide gels and therefore to reports of different molecular weights for OPN (PMID: 8293561). Depending on the cell and tissue source and/or the SDS-PAGE system, OPN migrates with a molecular weight of 44-80 kDa, as well as at some smaller bands corresponding to peptide fragments (PMID: 8195113; 17890765).

Storage

Storage:
Store at -20°C. Avoid exposure to light. Stable for one year after shipment.
Storage Buffer:
PBS with 50% glycerol, 0.05% Proclin300, 0.5% BSA, pH7.3
Aliquoting is unnecessary for -20°C storage

Selected Validation Data



Immunofluorescent analysis of (-20°C Ethanol) fixed HepG2 cells using Coralite® Plus 488 Osteopontin antibody (CL488-83341, Clone: 240206A2) at dilution of 1:200.