

For Research Use Only

# CoraLite® Plus 488-conjugated MIF Recombinant monoclonal antibody

Catalog Number:CL488-83199-2



## Basic Information

**Catalog Number:**

CL488-83199-2

**Source:**

Rabbit

**Isotype:**

IgG

**Immunogen Catalog Number:**

EG0574

**GenBank Accession Number:**

NM\_010798.2

**GeneID (NCBI):**

17319

**UNIPROT ID:**

P34884

**Full Name:**

macrophage migration inhibitory factor

**Calculated MW:**

13KD

**Observed MW:**

13 kDa

**Purification Method:**

Protein A purification

**CloneNo.:**

230529F2

**Recommended Dilutions:**

IF/ICC: 1:50-1:500

**Excitation/Emission maxima wavelengths:**

493 nm / 522 nm

## Applications

**Tested Applications:**

IF/ICC

**Species Specificity:**

human, mouse, rat

**Positive Controls:**

IF/ICC : NIH/3T3 cells,

## Background Information

Macrophage migration inhibitory factor (MIF) is a homo-trimeric protein that acts as a pleiotropic pro-inflammatory cytokine. It is involved in various functions, including leukocyte recruitment, inflammation, immune responses, cell proliferation, tumorigenesis, and counter-regulation of glucocorticoids (GC). MIF is a highly conserved protein of 12.5 kDa, with evolutionarily ancient homologues in plants, protozoans, nematodes, and invertebrates.

## Storage

**Storage:**

Store at -20°C. Avoid exposure to light. Stable for one year after shipment.

**Storage Buffer:**

PBS with 50% glycerol, 0.05% Proclin300, 0.5% BSA, pH7.3

Aliquoting is unnecessary for -20°C storage

For technical support and original validation data for this product please contact:

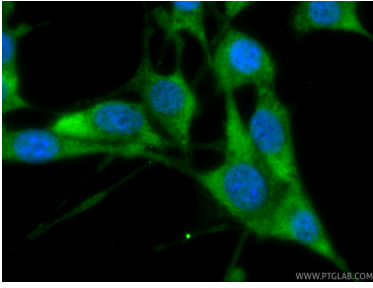
T: 4006900926

E: Proteintech-CN@ptglab.com

W: ptgcn.com

**This product is exclusively available under Proteintech Group brand and is not available to purchase from any other manufacturer.**

## Selected Validation Data



Immunofluorescent analysis of (-20°C Ethanol) fixed NIH/3T3 cells using CoraLite® Plus 488 MIF antibody (CL488-83199-2, Clone: 230529F2 ) at dilution of 1:200.