

For Research Use Only

# CoraLite® Plus 488-conjugated JUND Recombinant antibody



Catalog Number: **CL488-83134-6**

## Basic Information

Catalog Number:

**CL488-83134-6**

Size:

**1000 µg/ml**

Source:

**Rabbit**

Isotype:

**IgG**

GenBank Accession Number:

**NM\_005354**

GeneID (NCBI):

**3727**

UNIPROT ID:

**P17535**

Full Name:

**jun D proto-oncogene**

Calculated MW:

**35 kDa**

Observed MW:

**35-45 kDa**

Purification Method:

**Protein A purification**

CloneNo.:

**230457A4**

Recommended Dilutions:

**IF/ICC 1:50-1:500**

Excitation/Emission maxima  
wavelengths:

**493 nm / 522 nm**

## Applications

Tested Applications:

**IF/ICC, FC (Intra)**

Species Specificity:

**human**

Positive Controls:

**IF/ICC : HeLa cells,**

## Background Information

### Storage

Storage:

**Store at -20°C. Avoid exposure to light.**

Storage Buffer:

**PBS with 50% Glycerol, 0.05% Proclin300, 0.5% BSA, pH 7.3.**

**Aliquoting is unnecessary for -20°C storage**

For technical support and original validation data for this product please contact:

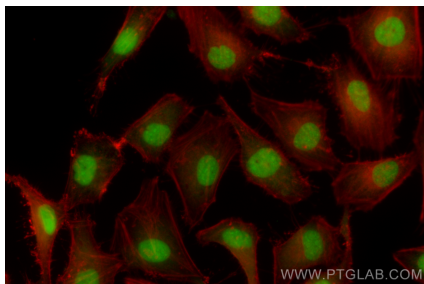
T: 4006900926

E: [Proteintech-CN@ptglab.com](mailto:Proteintech-CN@ptglab.com)

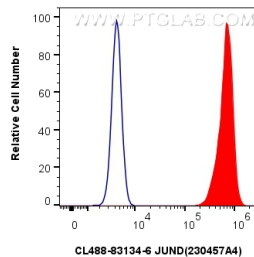
W: [ptgcn.com](http://ptgcn.com)

**This product is exclusively available under Proteintech Group brand and is not available to purchase from any other manufacturer.**

## Selected Validation Data



Immunofluorescent analysis of (4% PFA) fixed HeLa cells using Coralite® Plus 488 JUND antibody (CL488-83134-6, Clone: 230457A4 ) at dilution of 1:200.



1x10<sup>6</sup> HeLa cells were intracellularly stained with 0.4 ug Coralite® Plus 488 JUND Recombinant Antibody (CL488-83134-6, Clone:230457A4)(red), or 0.4 ug Coralite® Plus 488-conjugated Rabbit IgG control Rabbit PolyAb (CL488-30000) (blue). Cells were fixed and permeabilized with True-Nuclear Transcription Factor Buffer Set.