

For Research Use Only

# CoraLite® Plus 488-conjugated NSD3 Recombinant antibody



Catalog Number: **CL488-83116**

## Basic Information

Catalog Number:

CL488-83116

Size:

1000 µg/ml

Source:

Rabbit

Isotype:

IgG

Immunogen Catalog Number:

AG1894

GenBank Accession Number:

BC012059

GeneID (NCBI):

54904

UNIPROT ID:

Q9BZ95

Full Name:

Wolf-Hirschhorn syndrome candidate

1-like 1

Calculated MW:

1437 aa, 162 kDa

Purification Method:

Protein A purification

CloneNo.:

230499C5

Recommended Dilutions:

IF/ICC 1:50-1:500

Excitation/Emission maxima

wavelengths:

493 nm / 522 nm

## Applications

Tested Applications:

IF/ICC, FC (Intra)

Species Specificity:

human

Positive Controls:

IF/ICC : MCF-7 cells,

## Background Information

### Storage

Storage:

Store at -20°C. Avoid exposure to light. Stable for one year after shipment.

Storage Buffer:

PBS with 50% Glycerol, 0.05% Proclin300, 0.5% BSA, pH 7.3.

Aliquoting is unnecessary for -20°C storage

For technical support and original validation data for this product please contact:

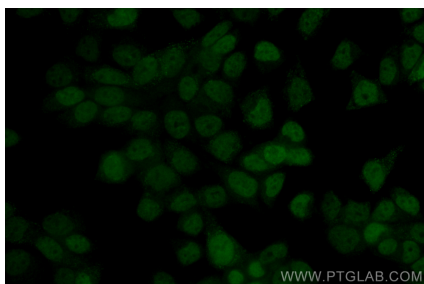
T: 4006900926

E: [Proteintech-CN@ptglab.com](mailto:Proteintech-CN@ptglab.com)

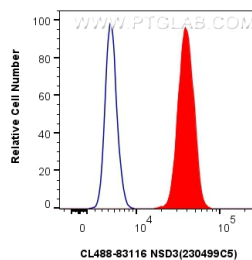
W: [ptgcn.com](http://ptgcn.com)

This product is exclusively available under Proteintech Group brand and is not available to purchase from any other manufacturer.

## Selected Validation Data



Immunofluorescent analysis of (4% PFA) fixed MCF-7 cells using CoraLite® Plus 488 NSD3 antibody (CL488-83116, Clone: 230499C5) at dilution of 1:200.



1x10<sup>6</sup> HeLa cells were intracellularly stained with 0.4 ug CoraLite® Plus 488 Nsd3 Recombinant Antibody (CL488-83116, Clone:230499C5)(red), or 0.4 ug CoraLite® Plus 488-conjugated Rabbit IgG control Rabbit PolyAb (CL488-30000) (blue). Cells were fixed and permeabilized with True-Nuclear Transcription Factor Buffer Set.