

For Research Use Only

CoraLite® Plus 488-conjugated MMP1 Recombinant antibody

Catalog Number: CL488-83114-2



Basic Information

Catalog Number: CL488-83114-2	GenBank Accession Number: BC013875	Purification Method: Protein A purification
Concentration: 1000 ug/ml	GeneID (NCBI): 4312	CloneNo.: 230343G1
Source: Rabbit	UNIPROT ID: P03956	Recommended Dilutions: IF/ICC 1:50-1:500
Isotype: IgG	Full Name: matrix metalloproteinase 1 (interstitial collagenase)	Excitation/Emission maxima wavelengths: 493 nm / 522 nm
Immunogen Catalog Number: EG0527	Calculated MW: 54 kDa	
	Observed MW: 45-48 kDa	

Applications

Tested Applications: IF/ICC	Positive Controls: IF/ICC : MCF-7 cells,
Species Specificity: human	

Background Information

MMP1, also named as CLG, belongs to the peptidase M10A family. MMP is the main enzyme that cleaves fibrillar collagen, namely types I, II, III, VII, and XI. It is involved in cell migration and invasion, and is frequently up-regulated in cancer cells. It can be cleavage to two major forms (22 kDa and 27 kDa) by undergoing autolytic, and the minor form (25 kDa) is the glycosylated form of the 22 kDa form. The 27 kDa form has no activity while the 22/25 kDa form can act as activator for collagenase. The sizes of pro-MMP-1 and active MMP-1 from human synovial fibroblasts have been reported as 52 to 56 kDa, depending on glycosylation, and 41 to 45 kDa, respectively. In addition, a band of 62-kDa observed in the current study is pro-MMP-1 (PMID:9418730).

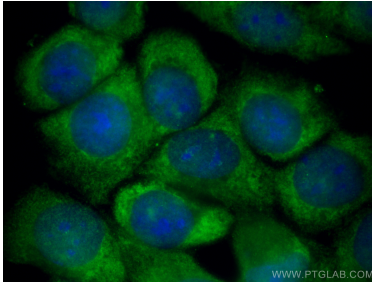
Storage

Storage:
Store at -20°C. Avoid exposure to light. Stable for one year after shipment.
Storage Buffer:
PBS with 50% glycerol, 0.05% Proclin300, 0.5% BSA, pH7.3
Aliquoting is unnecessary for -20°C storage

For technical support and original validation data for this product please contact:
T: 4006900926 E: Proteintech-CN@ptglab.com W: ptgcn.com

This product is exclusively available under Proteintech Group brand and is not available to purchase from any other manufacturer.

Selected Validation Data



Immunofluorescent analysis of (-20°C Methanol) fixed MCF-7 cells using CoraLite® Plus 488 MMP1 antibody (CL488-83114-2, Clone: 230343G1) at dilution of 1:200.