

For Research Use Only

CoraLite® Plus 488-conjugated LAMP5 Recombinant antibody

Catalog Number: CL488-82992-2



Basic Information

Catalog Number:

CL488-82992-2

Size:

1000 µg/ml

Source:

Rabbit

Isotype:

IgG

Immunogen Catalog Number:

AG33894

GenBank Accession Number:

BC050727

GeneID (NCBI):

24141

UNIPROT ID:

Q9UJQ1

Full Name:

chromosome 20 open reading frame

103

Observed MW:

31-35 kDa

Purification Method:

Protein A purification

CloneNo.:

230102F12

Recommended Dilutions:

IF/ICC 1:50-1:500

Excitation/Emission maxima

wavelengths:

493 nm / 522 nm

Applications

Tested Applications:

IF/ICC

Species Specificity:

human

Positive Controls:

IF/ICC : SH-SY5Y cells,

Background Information

LAMP5 (Lysosome-associated membrane glycoprotein 5) is also named as BAD-LAMP and C20orf103. BAD-LAMP is a novel biomarker of nonactivated human plasmacytoid dendritic cells (PMID: 21642595). LAMP5 may be one of the key genes in the development of Multiple myeloma (MM) as well as its recurrence (PMID: 37033323). LAMP5 is a mammalian ortholog of the *Caenorhabditis elegans* protein, UNC-46, which functions as a sorting factor to localize the vesicular GABA transporter UNC-47 to synaptic vesicles (PMID: 30867010). It was localized exclusively in inhibitory synaptic terminals (PMID: 30867010).

Storage

Storage:

Store at -20°C. Avoid exposure to light. Stable for one year after shipment.

Storage Buffer:

PBS with 50% Glycerol, 0.05% Proclin300, 0.5% BSA, pH 7.3.

Aliquoting is unnecessary for -20°C storage

For technical support and original validation data for this product please contact:

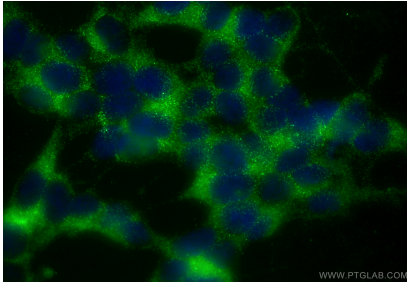
T: 4006900926

E: Proteintech-CN@ptglab.com

W: ptgcn.com

This product is exclusively available under Proteintech Group brand and is not available to purchase from any other manufacturer.

Selected Validation Data



Immunofluorescent analysis of (-20°C Ethanol)
fixed SH-SY5Y cells using CoraLite® Plus 488
LAMP5 antibody (CL488-82992-2, Clone:
230102F12) at dilution of 1:200.