

CoraLite® Plus 488-conjugated PGM5 Recombinant antibody

Catalog Number: **CL488-82965**

Basic Information

Catalog Number:

CL488-82965

Size:

1000 µg/ml

Source:

Rabbit

Isotype:

IgG

Immunogen Catalog Number:

AG34399

GenBank Accession Number:

NM_021965

GeneID (NCBI):

5239

UNIPROT ID:

Q15124

Full Name:

phosphoglucomutase 5

Calculated MW:

62 kDa

Observed MW:

62 kDa

Purification Method:

Protein A purification

CloneNo.:

230206C7

Excitation/Emission maxima
wavelengths:

493 nm / 522 nm

Applications

Tested Applications:

FC (Intra)

Species Specificity:

human

Background Information

Phosphoglucomutase-like protein 5 (also known as aciculin) is an enzyme encoded by the PGM5 gene. Gene functional studies show that PGM5 is similar to PGM1 but lacks enzymatic activity. PGM5 is tightly associated with the actin cytoskeleton and has primarily been investigated as an adhesion protein. It also functions as a cytoskeletal component of cell-matrix and cell-cell contacts in muscle and non-muscle cells. (PMID: 35819729)

Storage

Storage:

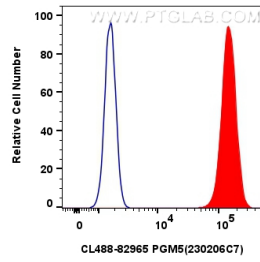
Store at -20°C. Avoid exposure to light. Stable for one year after shipment.

Storage Buffer:

PBS with 50% Glycerol, 0.05% Proclin300, 0.5% BSA, pH 7.3.

Aliquoting is unnecessary for -20°C storage

Selected Validation Data



1×10^6 PC-3 cells were intracellularly stained with 0.8 μ g Coralite® Plus 488 Pgm5 Recombinant Antibody (CL488-82965, Clone:230206C7)(red), or 0.8 μ g Coralite® Plus 488-conjugated Rabbit IgG control Rabbit PolyAb (CL488-30000) (blue). Cells were fixed with 4% PFA and permeabilized with Flow Cytometry Perm Buffer (PF00011-C).