

For Research Use Only

# CoraLite® Plus 488-conjugated RAB32 Recombinant antibody

Catalog Number: CL488-82960-5



## Basic Information

Catalog Number:

CL488-82960-5

Size:

1000 ug/ml

Source:

Rabbit

Isotype:

IgG

Immunogen Catalog Number:

AG1450

GenBank Accession Number:

BC015061

GeneID (NCBI):

10981

UNIPROT ID:

Q13637

Full Name:

RAB32, member RAS oncogene family

Calculated MW:

25 kDa

Purification Method:

Protein A purification

CloneNo.:

230315B10

Recommended Dilutions:

IF/ICC 1:50-1:500

Excitation/Emission maxima

wavelengths:

493 nm / 522 nm

## Applications

Tested Applications:

IF/ICC

Species Specificity:

human

Positive Controls:

IF/ICC : HeLa cells, U-251 cells

## Background Information

Rab32 belongs to the Ras-like small GTPase superfamily, which regulate membrane dynamics, including membrane fusion/fission, exocytosis, and cytoskeletal trafficking. Rab32 anchors the type II regulatory subunit of protein kinase A to the mitochondrion and aids in mitochondrial fission. TRab32 also appears to be involved in autophagy and melanosome secretion.

## Storage

Storage:

Store at -20°C. Avoid exposure to light. Stable for one year after shipment.

Storage Buffer:

PBS with 50% Glycerol, 0.05% Proclin300, 0.5% BSA, pH 7.3.

Aliquoting is unnecessary for -20°C storage

For technical support and original validation data for this product please contact:

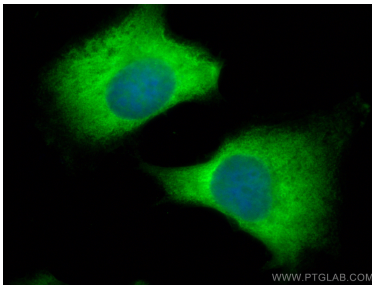
T: 4006900926

E: [Proteintech-CN@ptglab.com](mailto:Proteintech-CN@ptglab.com)

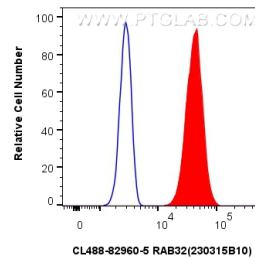
W: [ptgcn.com](http://ptgcn.com)

This product is exclusively available under Proteintech Group brand and is not available to purchase from any other manufacturer.

## Selected Validation Data



Immunofluorescent analysis of (-20°C Ethanol) fixed HeLa cells using Coralite® Plus 488 RAB32 antibody (CL488-82960-5, Clone: 230315B10 ) at dilution of 1:200.



1x10<sup>6</sup> HeLa cells were intracellularly stained with 0.4 ug Coralite® Plus 488 Rab32 Recombinant Antibody (CL488-82960-5, Clone:230315B10)(red), or 0.4 ug Coralite® Plus 488-conjugated Rabbit IgG control Rabbit PolyAb (CL488-30000) (blue). Cells were fixed with 4% PFA and permeabilized with Flow Cytometry Perm Buffer (PF00011-C).