

For Research Use Only

CoraLite® Plus 488-conjugated LAT Recombinant monoclonal antibody

Catalog Number: CL488-82901

Featured Product



Basic Information

Catalog Number:

CL488-82901

Source:

Rabbit

Isotype:

IgG

GenBank Accession Number:

BC011563

GeneID (NCBI):

27040

UNIPROT ID:

O43561

Full Name:

Linker for activation of T cells

Calculated MW:

262 aa, 28 kDa

Observed MW:

36-38 kDa

Purification Method:

Protein A purification

CloneNo.:

2P13

Recommended Dilutions:

IF/ICC: 1:50-1:500

FC (Intra): 0.80 ug per 10⁶ cells in a 100 µl suspension

Excitation/Emission maxima wavelengths:

493 nm / 522 nm

Applications

Tested Applications:

IF/ICC, FC (Intra)

Species Specificity:

human, mouse

Positive Controls:

IF/ICC : Jurkat cells,

FC (Intra) : Jurkat cells,

Background Information

LAT is a membrane-localized adaptor protein which is primarily concentrated in microdomains by palmitoylation. LAT plays a central role in T-cell activation by nucleating signaling complexes that are critical for the propagation of T-cell signals from the plasma membrane to the cellular interior. In addition to being a positive regulator of T cell signaling, LAT also recruits several negative regulatory proteins, including kinases, phosphatases, and ubiquitin ligases, which ultimately leads to signal termination. LAT is subject to ubiquitylation, and ubiquitin-resistant mutants of LAT display enhanced signaling.

Storage

Storage:

Store at -20°C. Avoid exposure to light. Stable for one year after shipment.

Storage Buffer:

PBS with 50% glycerol, 0.05% Proclin300, 0.5% BSA, pH7.3

Aliquoting is unnecessary for -20°C storage

For technical support and original validation data for this product please contact:

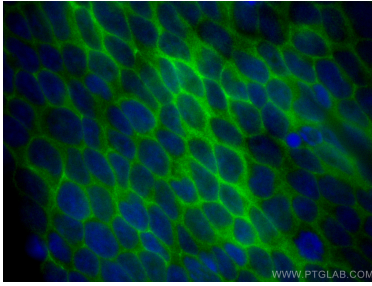
T: 4006900926

E: Proteintech-CN@ptglab.com

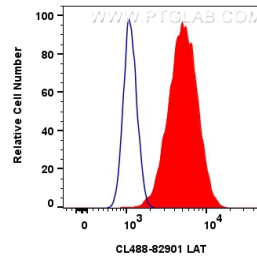
W: ptgcn.com

This product is exclusively available under Proteintech Group brand and is not available to purchase from any other manufacturer.

Selected Validation Data



Immunofluorescent analysis of (4% PFA) fixed Jurkat cells using CoraLite® Plus 488 LAT antibody (CL488-82901, Clone: 2P13) at dilution of 1:200.



1x10⁶ Jurkat cells were intracellularly stained with 0.8 ug CoraLite® Plus 488 LAT Recombinant Antibody (CL488-82901, Clone:2P13)(red), or 0.8 ug CoraLite® Plus 488-conjugated Rabbit IgG control Rabbit PolyAb (CL488-30000) (blue). Cells were fixed with 4% PFA and permeabilized with Flow Cytometry Perm Buffer.