

For Research Use Only

CoraLite® Plus 488-conjugated E2F7 Recombinant antibody

Catalog Number: CL488-82887



Basic Information

Catalog Number: CL488-82887	GenBank Accession Number: BC136366	Purification Method: Protein A purification
Concentration: 1000 ug/ml	GeneID (NCBI): 144455	CloneNo.: 230073C2
Source: Rabbit	UNIPROT ID: Q96AV8	Recommended Dilutions: IF/ICC: 1:50-1:500
Isotype: IgG	Full Name: E2F transcription factor 7	FC (Intra): 0.40 ug per 10 ⁶ cells in a 100 µl suspension
Immunogen Catalog Number: AG21599	Calculated MW: 911 aa, 100 kDa	Excitation/Emission maxima wavelengths: 493 nm / 522 nm

Applications

Tested Applications: IF/ICC, FC (Intra)	Positive Controls:
Species Specificity: human	IF/ICC : HeLa cells, FC (Intra) : HeLa cells,

Background Information

E2F7 also named as E2F transcription factor 7 is a 911 amino acid protein, which belongs to the E2F/DP family. E2F7 localizes in the nucleus and mainly forms homodimers and, to a lesser extent, heterodimers with E2F8. E2F7 as a transcription factor involves in various processes such as angiogenesis, polyploidization of specialized cells and DNA damage response. E2F7 mainly forms homodimers and to a lesser extent, heterodimers with E2F8. (PMID: 18194653)

Storage

Storage:
Store at -20°C. Avoid exposure to light. Stable for one year after shipment.
Storage Buffer:
PBS with 50% glycerol, 0.05% Proclin300, 0.5% BSA, pH7.3
Aliquoting is unnecessary for -20°C storage

For technical support and original validation data for this product please contact:

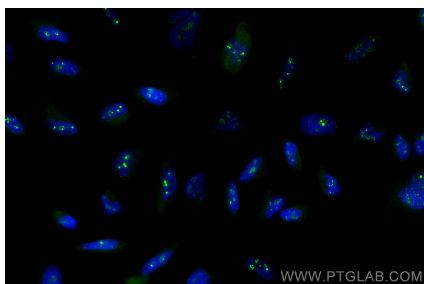
T: 4006900926

E: Proteintech-CN@ptglab.com

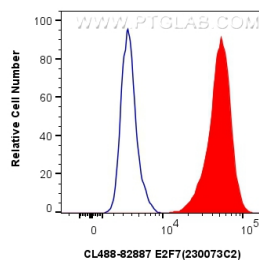
W: ptgcn.com

This product is exclusively available under Proteintech Group brand and is not available to purchase from any other manufacturer.

Selected Validation Data



Immunofluorescent analysis of (4% PFA) fixed HeLa cells using Coralite® Plus 488 E2F7 antibody (CL488-82887, Clone: 230073C2) at dilution of 1:200.



1x10⁶ HeLa cells were intracellularly stained with 0.4 ug Coralite® Plus 488-conjugated E2F7 Recombinant antibody (CL488-82887, Clone:230073C2)(red), or 0.4 ug Coralite® Plus 488-conjugated Rabbit IgG control Rabbit PolyAb (CL488-30000) (blue). Cells were fixed and permeabilized with Transcription Factor Staining Buffer Kit (PF00011).