

For Research Use Only

# CoraLite® Plus 488-conjugated Lamin B2 Recombinant antibody

Catalog Number: CL488-82801-4



## Basic Information

Catalog Number:

CL488-82801-4

Concentration:

1000 ug/ml

Source:

Rabbit

Isotype:

IgG

Immunogen Catalog Number:

AG1335

GenBank Accession Number:

BC006551

GeneID (NCBI):

84823

UNIPROT ID:

Q03252

Full Name:

lamin B2

Calculated MW:

68 kDa

Observed MW:

68 kDa

Purification Method:

Protein A purification

CloneNo.:

230184C7

Recommended Dilutions:

IF/ICC: 1:300-1:1200

FC (Intra): 0.40 ug per 10<sup>6</sup> cells in a 100 µl suspension

Excitation/Emission maxima wavelengths:

493 nm / 522 nm

## Applications

Tested Applications:

IF/ICC, FC (Intra)

Species Specificity:

human

Positive Controls:

IF/ICC : HepG2 cells,

FC (Intra) : HepG2 cells,

## Background Information

Lamins are nuclear membrane structural components that are important in structural integrity of the nucleus and may also interact with chromatin (PMID: 33033404). Research studies show that lamin B2 knockout mice exhibit neuronal developmental defects and that both proteins are essential for typical brain development (PMID: 20145110). Mutations in Lamin B2 can result in a susceptibility to developing acquired partial lipodystrophy, a rare disorder characterized by the progressive loss of subcutaneous fat in a bilaterally symmetrical fashion (PMID: 16826530).

## Storage

Storage:

Store at -20°C. Avoid exposure to light. Stable for one year after shipment.

Storage Buffer:

PBS with 50% glycerol, 0.05% Proclin300, 0.5% BSA, pH7.3

Aliquoting is unnecessary for -20°C storage

For technical support and original validation data for this product please contact:

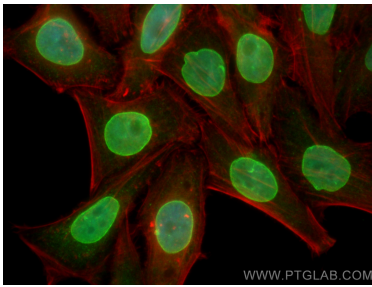
T: 4006900926

E: [Proteintech-CN@ptglab.com](mailto:Proteintech-CN@ptglab.com)

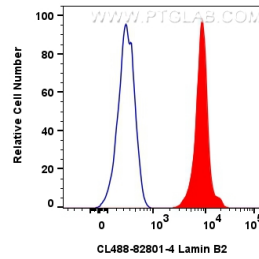
W: [ptgcn.com](http://ptgcn.com)

This product is exclusively available under Proteintech Group brand and is not available to purchase from any other manufacturer.

## Selected Validation Data



Immunofluorescent analysis of (4% PFA) fixed HepG2 cells using CoraLite® Plus 488 Lamin B2 antibody (CL488-82801-4, Clone: 230184C7) at dilution of 1:600, CL594-phalloidin (red).



1x10<sup>6</sup> HepG2 cells were intracellularly stained with 0.4 ug CoraLite® Plus 488 Lamin B2 Recombinant Antibody (CL488-82801-4, Clone:230184C7)(red), or 0.4 ug CoraLite® Plus 488-conjugated Rabbit IgG control Rabbit PolyAb (CL488-30000) (blue). Cells were fixed and permeabilized with Transcription Factor Staining Buffer Kit (PF00011).