

For Research Use Only

CoraLite® Plus 488-conjugated Phospho-Myosin Light Chain 2 (Thr18/Ser19) Recombinant antibody

Catalog Number: CL488-82717



Basic Information

Catalog Number:

CL488-82717

Concentration:

1000 ug/ml

Source:

Rabbit

Isotype:

IgG

GenBank Accession Number:

BC002648

GeneID (NCBI):

10398

UNIPROT ID:

P24844

Full Name:

myosin, light chain 9, regulatory

Calculated MW:

20 kDa

Observed MW:

19-20 kDa

Purification Method:

Protein A purification

CloneNo.:

1G10

Recommended Dilutions:

FC (Intra): 0.40 ug per 10⁶ cells in a 100 µl suspension

Excitation/Emission maxima wavelengths:

493 nm / 522 nm

Applications

Tested Applications:

FC (Intra)

Species Specificity:

human, mouse

Positive Controls:

FC (Intra) : Calyculin A treated HeLa cells,

Background Information

Myosin II is an actin-binding protein composed of MHC (myosin heavy chain), MLCs/MRLCs (myosin regulatory light chains) and ELCs (essential light chains). The Myosin Light Chains are divided into basic MLC (MLC I) and regulatory MLC (MLC II or Myosin Regulatory Light Chain, MRLC). MRLC can be classified into two major types: class I MRLC found in muscles (MLC1, MLC2, MLC3, MYL4, MYL5, MYL6, MYL7, etc), and class II MRLCs present in non-muscle cells (such as MYL9, MYL12A, MYL12B). Phosphorylation of myosin II regulatory light chain (MRLC) is important for cell motility and cytokinesis in nonmuscle cells. Phosphorylation of MRLC at Ser19 (1P-MRLC) enhances myosin II activity, which is further enhanced by MRLC diphosphorylation at Thr18/Ser19 (2P-MRLC) in vitro .PMID: 23951055, PMID: 21126233

This antibody can recognize the phosphorylation of three highly homologous Myosin-regulated light chains: MYL12A, MYL12B and MYL9.

Storage

Storage:

Store at -20°C. Avoid exposure to light. Stable for one year after shipment.

Storage Buffer:

PBS with 50% glycerol, 0.05% Proclin300, 0.5% BSA, pH7.3

Aliquoting is unnecessary for -20°C storage

For technical support and original validation data for this product please contact:

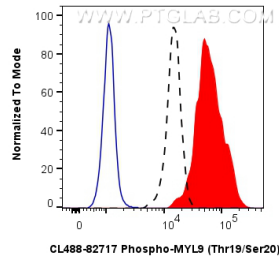
T: 4006900926

E: Proteintech-CN@ptglab.com

W: ptgcn.com

This product is exclusively available under Proteintech Group brand and is not available to purchase from any other manufacturer.

Selected Validation Data



1×10^6 Calyculin A treated HeLa cells were intracellularly stained with 0.4 ug Coralite® Plus 488 Phospho-Myosin Light Chain 2 (Thr18/Ser19) Recombinant Antibody (CL488-82717, Clone:1G10) (red), or 0.4 ug Coralite® Plus 488 Rabbit IgG Isotype Control Recombinant Antibody (CL488-98136, Clone: 240953C9) (blue). Cells were fixed with 4% PFA and permeabilized with 90% MeOH.