

For Research Use Only

CoraLite® Plus 488-conjugated ACTA1-Specific Recombinant monoclonal antibody



Catalog Number: CL488-82714-5

Basic Information

Catalog Number:

CL488-82714-5

Source:

Rabbit

Isotype:

IgG

GenBank Accession Number:

NM_001100

GeneID (NCBI):

58

UNIPROT ID:

P68133

Full Name:

actin, alpha 1, skeletal muscle

Calculated MW:

42 kDa

Observed MW:

39-42 kDa

Purification Method:

Protein A purification

CloneNo.:

5B15

Recommended Dilutions:

IF-P: 1:50-1:500

Excitation/Emission maxima

wavelengths:

493 nm / 522 nm

Applications

Tested Applications:

IF-P

Species Specificity:

human, mouse, rat, pig, chicken

Positive Controls:

IF-P: mouse skeletal muscle tissue,

Background Information

Actins are highly conserved proteins that are involved in various types of cell motility and are ubiquitously expressed in all eukaryotic cells. The ACTA1 gene encodes skeletal muscle alpha-actin, the principal actin isoform in adult skeletal muscle, which interacts with a variety of proteins to produce the force for muscle contraction. There is only the N-terminal 8 amino acids difference among the actin family members. This antibody is specific to the ACTA1. It does not cross-react with other actin isoforms.

Storage

Storage:

Store at -20°C. Avoid exposure to light. Stable for one year after shipment.

Storage Buffer:

PBS with 50% glycerol, 0.05% Proclin300, 0.5% BSA, pH7.3

Aliquoting is unnecessary for -20°C storage

For technical support and original validation data for this product please contact:

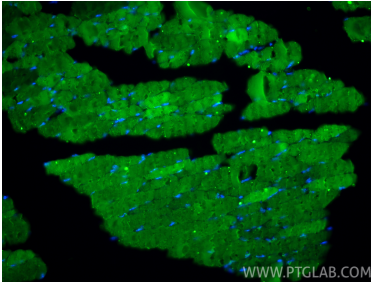
T: 4006900926

E: Proteintech-CN@ptglab.com

W: ptgcn.com

This product is exclusively available under Proteintech Group brand and is not available to purchase from any other manufacturer.

Selected Validation Data



Immunofluorescent analysis of (4% PFA) fixed paraffin-embedded mouse skeletal muscle tissue using CoraLite® Plus 488 ACTA1-Specific antibody (CL488-82714-5, Clone: 5B15) at dilution of 1:200. Heat mediated antigen retrieval with Tris-EDTA buffer (pH 9.0).