

For Research Use Only

CoraLite® Plus 488-conjugated Cyclin E1 Recombinant monoclonal antibody

Catalog Number: CL488-82700-9



Basic Information

Catalog Number:

CL488-82700-9

Source:

Rabbit

Isotype:

IgG

Immunogen Catalog Number:

AG2110

GenBank Accession Number:

BC035498

GeneID (NCBI):

898

UNIPROT ID:

P24864

Full Name:

cyclin E1

Calculated MW:

410 aa, 47 kDa

Purification Method:

Protein A purification

CloneNo.:

240136H5

Recommended Dilutions:

IF/ICC: 1:50-1:500

Excitation/Emission maxima wavelengths:

493 nm / 522 nm

Applications

Tested Applications:

IF/ICC

Species Specificity:

human, mouse, rat

Positive Controls:

IF/ICC : HepG2 cells,

Background Information

Cyclin E1 (CCNE1) is a member of the highly conserved cyclin family, whose members are characterized by a dramatic periodicity in protein abundance through the cell cycle. CCNE1, an essential cyclin activating Cdk2, regulates the G1-S phase transition of the mammalian cell division cycle. Its timing expression plays a direct role in the initiation of DNA replication, the control of histone biosynthesis, and the centrosome cycle. CCNE1 is associated with disease progression in various malignancies and is associated clinically with poor prognosis. Two bands of Cyclin E1 were expressed in U2OS and MDA-MB-231 cells (PMID:9858585, PMID: 24112607).

Storage

Storage:

Store at -20°C. Avoid exposure to light. Stable for one year after shipment.

Storage Buffer:

PBS with 50% glycerol, 0.05% Proclin300, 0.5% BSA, pH7.3

Aliquoting is unnecessary for -20°C storage

For technical support and original validation data for this product please contact:

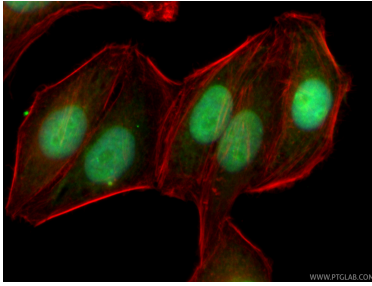
T: 4006900926

E: Proteintech-CN@ptglab.com

W: ptgcn.com

This product is exclusively available under Proteintech Group brand and is not available to purchase from any other manufacturer.

Selected Validation Data



Immunofluorescent analysis of (4% PFA) fixed HepG2 cells using CoraLite® Plus 488 Cyclin E1 antibody (CL488-82700-9, Clone: 240136H5) at dilution of 1:200, CL594-phalloidin (red).