

For Research Use Only

# CoraLite® Plus 488-conjugated RPL14 Recombinant monoclonal antibody

Catalog Number:CL488-82688



## Basic Information

Catalog Number:

CL488-82688

Source:

Rabbit

Isotype:

IgG

Immunogen Catalog Number:

AG6976

GenBank Accession Number:

BC000606

GeneID (NCBI):

9045

UNIPROT ID:

P50914

Full Name:

ribosomal protein L14

Calculated MW:

23 kDa

Observed MW:

23-27 kDa

Purification Method:

Protein A purification

CloneNo.:

2K22

Recommended Dilutions:

IF/ICC: 1:300-1:1200

Excitation/Emission maxima  
wavelengths:

493 nm / 522 nm

## Applications

Tested Applications:

IF/ICC

Species Specificity:

human

Positive Controls:

IF/ICC : HepG2 cells,

## Background Information

RPL14 is a component of the large ribosomal subunit. The protein belongs to the L14E family of ribosomal proteins. It contains a basic region-leucine zipper (bZIP)-like domain.

## Storage

Storage:

Store at -20°C. Avoid exposure to light. Stable for one year after shipment.

Storage Buffer:

PBS with 50% glycerol, 0.05% Proclin300, 0.5% BSA, pH7.3

Aliquoting is unnecessary for -20°C storage

For technical support and original validation data for this product please contact:

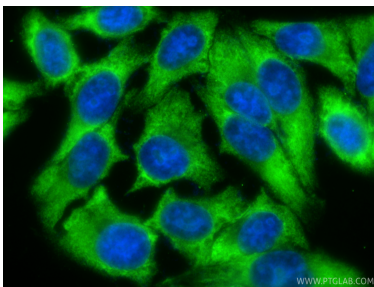
T: 4006900926

E: [Proteintech-CN@ptglab.com](mailto:Proteintech-CN@ptglab.com)

W: [ptgcn.com](http://ptgcn.com)

**This product is exclusively available under Proteintech Group brand and is not available to purchase from any other manufacturer.**

## Selected Validation Data



Immunofluorescent analysis of (-20°C Ethanol) fixed HepG2 cells using CoraLite® Plus 488 RPL14 antibody (CL488-82688, Clone: 2K22 ) at dilution of 1:600.