

# CoraLite® Plus 488-conjugated STAT6 Recombinant antibody

Catalog Number: **CL488-82630**

## Basic Information

**Catalog Number:**

CL488-82630

**Size:**

1000 ug/ml

**Source:**

Rabbit

**Isotype:**

IgG

**GenBank Accession Number:**

BC075852

**GeneID (NCBI):**

6778

**UNIPROT ID:**

P42226

**Full Name:**

signal transducer and activator of  
transcription 6, interleukin-4 induced

**Calculated MW:**

94 kDa

**Observed MW:**

105-110 kDa

**Purification Method:**

Protein A purification

**CloneNo.:**

4F19

**Recommended Dilutions:**

IF/ICC 1:50-1:500

**Excitation/Emission maxima  
wavelengths:**

493 nm / 522 nm

## Applications

**Tested Applications:**

IF/ICC, FC (Intra)

**Species Specificity:**

human, mouse, rat

**Positive Controls:**

IF/ICC : HeLa cells,

## Background Information

STAT6, also named as Signal transducer and activator of transcription 6, is a 847 amino acid protein, which belongs to the transcription factor STAT family. STAT6 forms a homodimer or a heterodimer with a related family member. STAT6 translocates into the nucleus in response to phosphorylation. STAT6 is Involved in IL4/interleukin-4- and IL3/interleukin-3-mediated signaling.

## Storage

**Storage:**

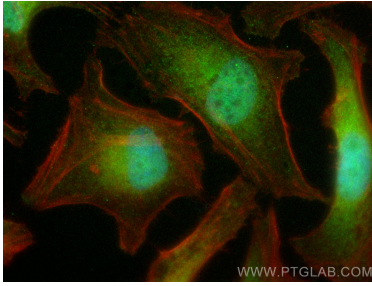
Store at -20°C. Avoid exposure to light. Stable for one year after shipment.

**Storage Buffer:**

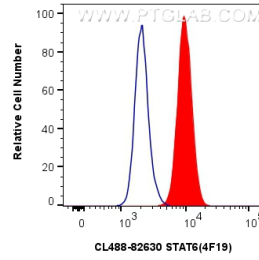
PBS with 50% Glycerol, 0.05% Proclin300, 0.5% BSA, pH 7.3.

Aliquoting is unnecessary for -20°C storage

## Selected Validation Data



Immunofluorescent analysis of (4% PFA) fixed HeLa cells using CoraLite® Plus 488 STAT6 antibody (CL488-82630, Clone: 4F19) at dilution of 1:200, CL594-Phalloidin (red).



1x10<sup>6</sup> HepG2 cells were intracellularly stained with 0.4 ug CoraLite® Plus 488-conjugated STAT6 Recombinant antibody (CL488-82630, Clone:4F19) (red), or 0.4 ug CoraLite® Plus 488-conjugated Rabbit IgG control Rabbit PolyAb (CL488-30000) (blue). Cells were fixed and permeabilized with Transcription Factor Staining Buffer Kit (PF00011).