

CoraLite® Plus 488-conjugated FIS1 Recombinant antibody

Catalog Number: **CL488-82248**

Basic Information

Catalog Number:

CL488-82248

Size:

1000 µg/ml

Source:

Rabbit

Isotype:

IgG

Immunogen Catalog Number:

AG1409

GenBank Accession Number:

BC009428

GeneID (NCBI):

51024

UNIPROT ID:

Q9Y3D6

Full Name:

fission 1 (mitochondrial outer membrane) homolog (S. cerevisiae)

Calculated MW:

17 kDa

Observed MW:

15 kDa

Purification Method:

Protein A purification

CloneNo.:

6N15

Recommended Dilutions:

IF/ICC 1:50-1:500

Excitation/Emission maxima wavelengths:

493 nm / 522 nm

Applications

Tested Applications:

IF/ICC, FC (Intra)

Species Specificity:

human, mouse, rat

Positive Controls:

IF/ICC : HepG2 cells,

Background Information

Fis1 (fission 1) is an integral mitochondrial outer membrane protein that participates in mitochondrial fission by interacting with dynamin-related protein 1 (Drp1). Excessive mitochondrial fission is associated with the pathology of a number of neurodegenerative or neurodevelopmental diseases. Increased expression of Fis1 has been found in Huntington's disease (HD)-affected brain, Alzheimer's disease (AD) patients, and autism spectrum disorder. (PMID: 21257639, 21459773, 23333625)

Storage

Storage:

Store at -20°C. Avoid exposure to light. Stable for one year after shipment.

Storage Buffer:

PBS with 50% Glycerol, 0.05% Proclin300, 0.5% BSA, pH 7.3.

Aliquoting is unnecessary for -20°C storage

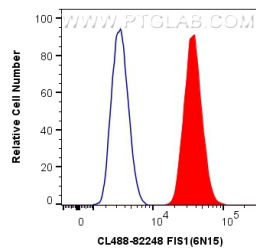
For technical support and original validation data for this product please contact:

T: 4006900926

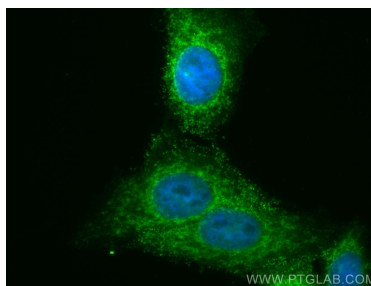
E: Proteintech-CN@ptglab.comW: ptgcn.com

This product is exclusively available under Proteintech Group brand and is not available to purchase from any other manufacturer.

Selected Validation Data



1X10⁶ HepG2 cells were intracellularly stained with 0.8 ug CoraLite® Plus 488 Anti-Human FIS1 (CL488-82248, Clone:6N15) (red), or 0.8 ug Isotype Control. Cells were fixed with 4% PFA and permeabilized with Flow Cytometry Perm Buffer (PF00011-C).



Immunofluorescent analysis of (4% PFA) fixed HepG2 cells using CoraLite® Plus 488 FIS1 antibody (CL488-82248, Clone: 6N15) at dilution of 1:200.