

For Research Use Only

CoraLite® Plus 488-conjugated SLC7A11/xCT Recombinant antibody

Catalog Number: CL488-82115-2



Basic Information

Catalog Number:

CL488-82115-2

Size:

1000 µg/ml

Source:

Rabbit

Isotype:

IgG

Immunogen Catalog Number:

AG25431

GenBank Accession Number:

BC012087

GeneID (NCBI):

23657

UNIPROT ID:

Q9UPY5

Full Name:

solute carrier family 7, (cationic amino acid transporter, y+ system) member 11

Calculated MW:

55 kDa

Purification Method:

Protein A purification

CloneNo.:

230227C5

Recommended Dilutions:

IF/ICC 1:50-1:500

Excitation/Emission maxima wavelengths:

493 nm / 522 nm

Applications

Tested Applications:

IF/ICC, FC (Intra)

Species Specificity:

human

Positive Controls:

IF/ICC : HeLa cells,

Background Information

SLC7A11 (also known as xCT) is a membrane transporter involved in the uptake of cystine. It promotes glutathione synthesis through the uptake of cystine and the concomitant release of glutamate. This, in turn, protects cells from oxidative stress, maintains cellular redox balance, and prevents cell death induced by lipid peroxidation. SLC7A11 has been identified as a potential target for cancer therapeutics. It is overexpressed in multiple malignant tumors and is closely associated with the growth, prognosis, metastasis, and treatment response of various cancers including lung cancer.

Storage

Storage:

Store at -20°C. Avoid exposure to light. Stable for one year after shipment.

Storage Buffer:

PBS with 50% Glycerol, 0.05% Proclin300, 0.5% BSA, pH 7.3.

Aliquoting is unnecessary for -20°C storage

For technical support and original validation data for this product please contact:

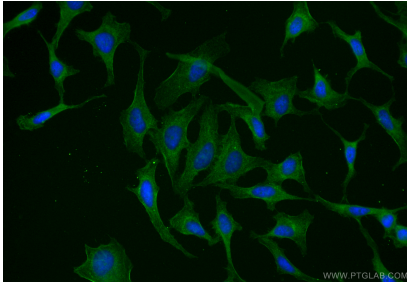
T: 4006900926

E: Proteintech-CN@ptglab.com

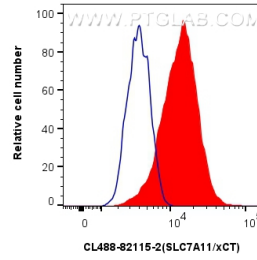
W: ptgcn.com

This product is exclusively available under Proteintech Group brand and is not available to purchase from any other manufacturer.

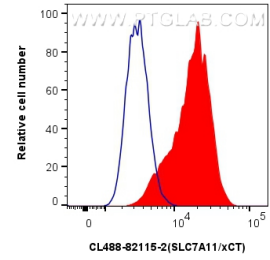
Selected Validation Data



Immunofluorescent analysis of (-20°C Ethanol) fixed HeLa cells using Coralite® Plus 488 SLC7A11/xCT antibody (CL488-82115-2, Clone: 230227C5) at dilution of 1:200.



1x10⁶ HeLa cells were intracellularly stained with 0.25 ug Coralite® Plus 488 Slc7a11/Xct Recombinant Antibody (CL488-82115-2, Clone:230227C5)(red), or 0.25 ug Coralite® Plus 488 Rabbit IgG Isotype Control Recombinant Antibody (CL488-98136, Clone: 240953C9) (blue). Cells were fixed with 4% PFA and permeabilized with Flow Cytometry Perm Buffer (PF00011-C).



1x10⁶ A549 cells were intracellularly stained with 0.25 ug Coralite® Plus 488 Slc7a11/Xct Recombinant Antibody (CL488-82115-2, Clone:230227C5)(red), or 0.25 ug Coralite® Plus 488 Rabbit IgG Isotype Control Recombinant Antibody (CL488-98136, Clone: 240953C9) (blue). Cells were fixed with 4% PFA and permeabilized with Flow Cytometry Perm Buffer (PF00011-C).