

For Research Use Only

CoraLite® Plus 488-conjugated B23/NPM1 Recombinant monoclonal antibody



Catalog Number: CL488-82030

Featured Product

Basic Information

Catalog Number:

CL488-82030

Source:

Rabbit

Isotype:

IgG

Immunogen Catalog Number:

AG0286

GenBank Accession Number:

BC002398

GeneID (NCBI):

4869

UNIPROT ID:

P06748

Full Name:

nucleophosmin (nucleolar phosphoprotein B23, numatrin)

Calculated MW:

33 kDa

Observed MW:

38 kDa

Purification Method:

Protein A purification

CloneNo.:

1G4

Recommended Dilutions:

IF/ICC: 1:50-1:500

Excitation/Emission maxima wavelengths:

493 nm / 522 nm

Applications

Tested Applications:

IF/ICC

Species Specificity:

human

Positive Controls:

IF/ICC : HeLa cells,

Background Information

Nucleophosmin (NPM1,B23) is a putative ribosome assembly factor with a high affinity for peptides containing nuclear localization signals (NLSs). The transport of proteins across the nuclear envelope is a selective, multistep process involving several cytoplasmic factors. Proteins must be recognized as import substrates, dock at the nuclear pore complex and translocate across the nuclear envelope in an ATP-dependent fashion. Several cytosolic and nuclear proteins that are central to this process have been identified. The 38 kDa nuclear protein nucleophosmin is involved in ribosomal assembly and rRNA transport. It is an abundant protein that is highly phosphorylated by Cdc2 kinase during mitosis.

Storage

Storage:

Store at -20°C. Avoid exposure to light. Stable for one year after shipment.

Storage Buffer:

PBS with 50% glycerol, 0.05% Proclin300, 0.5% BSA, pH7.3

Aliquoting is unnecessary for -20°C storage

For technical support and original validation data for this product please contact:

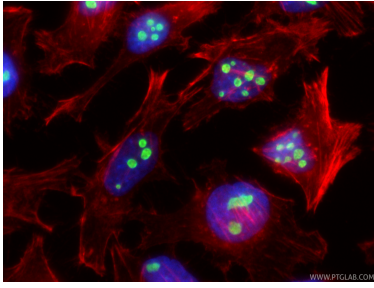
T: 4006900926

E: Proteintech-CN@ptglab.com

W: ptgcn.com

This product is exclusively available under Proteintech Group brand and is not available to purchase from any other manufacturer.

Selected Validation Data



Immunofluorescent analysis of (4% PFA) fixed HeLa cells using CoraLite® Plus 488 B23/NPM1 antibody (CL488-82030, Clone: 1G4) at dilution of 1:200, CL594-phalloidin (red).