

For Research Use Only

# CoraLite® Plus 488-conjugated Phospho-TSC2 (Ser939) Recombinant antibody

Catalog Number: CL488-81654



## Basic Information

Catalog Number:

CL488-81654

Concentration:

1000 ug/ml

Source:

Rabbit

Isotype:

IgG

GenBank Accession Number:

BC150300

GeneID (NCBI):

7249

UNIPROT ID:

P49815

Full Name:

tuberous sclerosis 2

Calculated MW:

1807 aa, 201 kDa

Observed MW:

200 kDa

Purification Method:

Protein A purification

CloneNo.:

2B18

Recommended Dilutions:

FC (Intra): 0.25 ug per 10<sup>6</sup> cells in a 100 µl suspension

Excitation/Emission maxima wavelengths:

493 nm / 522 nm

## Applications

Tested Applications:

FC (Intra)

Species Specificity:

human

Positive Controls:

FC (Intra) : Calyculin A treated HEK-293 cells,

## Background Information

TSC2, also named Tuberin, plays an essential role in the cellular energy response pathway. TSC2 forms a physical and functional complex with TSC1 that can inhibit the nutrient-mediated or growth factor-stimulated phosphorylation of S6K1 and EIF4EBP1 by negatively regulating mTORC1 signaling. Tuberin is phosphorylated on Ser939 and Thr1462 in response to PI3K activation and the human TSC complex is a direct biochemical target of the PI3K/Akt pathway (PMID: 12150915).

## Storage

Storage:

Store at -20°C. Avoid exposure to light. Stable for one year after shipment.

Storage Buffer:

PBS with 50% glycerol, 0.05% Proclin300, 0.5% BSA, pH7.3

Aliquoting is unnecessary for -20°C storage

For technical support and original validation data for this product please contact:

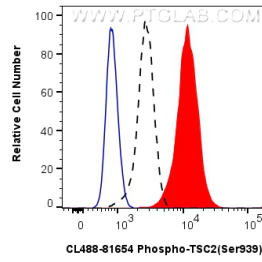
T: 4006900926

E: [Proteintech-CN@ptglab.com](mailto:Proteintech-CN@ptglab.com)

W: [ptgcn.com](http://ptgcn.com)

This product is exclusively available under Proteintech Group brand and is not available to purchase from any other manufacturer.

## Selected Validation Data



1X10<sup>6</sup> HEK-293 cells untreated (dashed lines) or treated with Calyculin A which intracellularly stained with 0.25 ug Coralite® Plus 488 Phospho-Tsc2 (Ser939) Recombinant Antibody (CL488-81654, Clone:2B18)(red), or 0.25 ug Coralite® Plus 488 Rabbit IgG Isotype Control RecAb (CL488-98136, Clone: 240953C9) (blue). Cells were fixed with 4% PFA and permeabilized with 90% MeOH.