

For Research Use Only

# CoraLite® Plus 488-conjugated ENO1/2/3 Recombinant antibody

Catalog Number:CL488-81504

Featured Product



## Basic Information

Catalog Number:

CL488-81504

Size:

1000 ug/ml

Source:

Rabbit

Isotype:

IgG

Immunogen Catalog Number:

AG1692

GenBank Accession Number:

BC015641

GeneID (NCBI):

2023

ENSEMBL Gene ID:

ENSG00000074800

UNIPROT ID:

P06733

Full Name:

enolase 1, (alpha)

Calculated MW:

47 kDa

Observed MW:

47 kDa

Purification Method:

Protein A purification

CloneNo.:

6E24

Recommended Dilutions:

IF/ICC 1:200-1:800

Excitation/Emission maxima  
wavelengths:

493 nm / 522 nm

## Applications

Tested Applications:

IF/ICC, FC (Intra)

Species Specificity:

human, mouse, rat, pig

Positive Controls:

IF/ICC : HepG2 cells,

## Background Information

Enolase (ENO), also known as 2-phospho-D-glycerate hydrolase, is a metalloenzyme that catalyzes the dehydration of 2-phospho-D-glycerate into phosphoenolpyruvate in the glycolytic pathway. There are three different ENO isoforms in higher eukaryotes, including ENO1 or  $\alpha$ -ENO, ENO2 or  $\gamma$ -ENO, and ENO3 or  $\beta$ -ENO. Furthermore, the expression of the different ENO isoforms is tissue specificity. ENO1 is expressed in almost all kinds of tissue, whereas ENO3 is restricted to muscle tissues and ENO2 is described as a neuron- and neuroendocrine tissue-specific enolase. ENO1 serves multifunctional roles in physiological and pathological processes. (PMID: 32256815). This antibody can recognize ENO1, ENO2, and ENO3.

## Storage

Storage:

Store at -20°C. Avoid exposure to light. Stable for one year after shipment.

Storage Buffer:

PBS with 50% Glycerol, 0.05% Proclin300, 0.5% BSA, pH 7.3.

Aliquoting is unnecessary for -20°C storage

For technical support and original validation data for this product please contact:

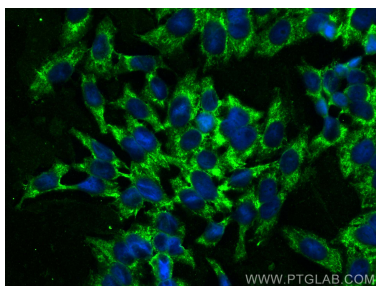
T: 4006900926

E: [Proteintech-CN@ptglab.com](mailto:Proteintech-CN@ptglab.com)

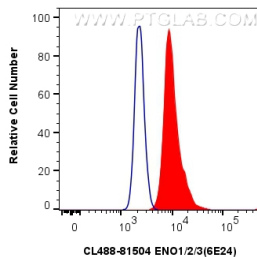
W: [ptgcn.com](http://ptgcn.com)

This product is exclusively available under Proteintech Group brand and is not available to purchase from any other manufacturer.

## Selected Validation Data



Immunofluorescent analysis of (-20°C Ethanol) fixed HepG2 cells using Coralite® Plus 488 ENO1/2/3 antibody (CL488-81504, Clone: 6E24 ) at dilution of 1:400.



1x10<sup>6</sup> HepG2 cells were intracellularly stained with 0.4 ug Coralite® Plus 488-conjugated ENO1/2/3 Recombinant antibody (CL488-81504, Clone:6E24)(red), or 0.4 ug Coralite® Plus 488-conjugated Rabbit IgG control Rabbit PolyAb (CL488-30000) (blue). Cells were fixed with 4% PFA and permeabilized with Flow Cytometry Perm Buffer (PF00011-C).