

For Research Use Only

CoraLite® Plus 488-conjugated PSAT1 Recombinant antibody



Catalog Number: **CL488-81479**

Basic Information

Catalog Number: CL488-81479	GenBank Accession Number: BC004863	Purification Method: Protein A purification
Size: 1000 µg/ml	GeneID (NCBI): 29968	CloneNo.: 1022
Source: Rabbit	UNIPROT ID: Q9Y617	Recommended Dilutions: IF 1:50-1:500
Isotype: IgG	Full Name: phosphoserine aminotransferase 1	Excitation/Emission maxima wavelengths: 493 nm / 522 nm
Immunogen Catalog Number: AG0776	Calculated MW: 40 kDa	
	Observed MW: 37-40 kDa	

Applications

Tested Applications: IF/ICC	Positive Controls: IF : HepG2 cells,
Species Specificity: Human, Mouse, Pig	

Background Information

PSAT1, also named as PSA and PSAT, belongs to the class-V pyridoxal-phosphate-dependent aminotransferase family and SerC subfamily. It catalyzes the reversible conversion of 3-phosphohydroxypyruvate to phosphoserine and of 3-hydroxy-2-oxo-4-phosphonooxybutanoate to phosphohydroxythreonine. PSAT1 represents a new interesting target for CRC therapy. It may be implicated in altered serine metabolism and schizophrenia spectrum conditions. (PMID: 18221502, 20955740)

Storage

Storage:
Store at -20°C. Avoid exposure to light. Stable for one year after shipment.
Storage Buffer:
PBS with 50% Glycerol, 0.05% Proclin300, 0.5% BSA, pH 7.3.
Aliquoting is unnecessary for -20°C storage

For technical support and original validation data for this product please contact:

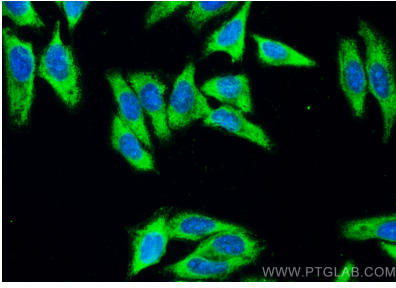
T: 4006900926

E: Proteintech-CN@ptglab.com

W: ptgcn.com

This product is exclusively available under Proteintech Group brand and is not available to purchase from any other manufacturer.

Selected Validation Data



Immunofluorescent analysis of (-20°C Ethanol) fixed HepG2 cells using CoraLite® Plus 488 PSAT1 antibody (CL488-81479, Clone: 1O22) at dilution of 1:200.