

For Research Use Only

CoraLite® Plus 488-conjugated Phospho-RPS6KA1 (Thr359/Ser363) Recombinant antibody

Catalog Number: CL488-81475



Basic Information

Catalog Number:

CL488-81475

Concentration:

1000 ug/ml

Source:

Rabbit

Isotype:

IgG

GenBank Accession Number:

BC014966

GeneID (NCBI):

6195

UNIPROT ID:

Q15418

Full Name:

ribosomal protein S6 kinase, 90kDa,
polypeptide 1

Calculated MW:

735 aa, 83 kDa

Observed MW:

83-90 kDa

Purification Method:

Protein A purification

CloneNo.:

3010

Recommended Dilutions:

FC (Intra): 0.25 ug per 10⁶ cells in a
100 µl suspension

Excitation/Emission maxima
wavelengths:

493 nm / 522 nm

Applications

Tested Applications:

FC (Intra)

Species Specificity:

human, mouse

Positive Controls:

FC (Intra): λ phosphatase treated HeLa cells,

Background Information

The 90 kDa ribosomal S6 kinases (RSK1-4) are a family of widely expressed serine/threonine kinases and play an important role in the MAPK signaling cascade and act downstream of ERK1/2 signaling. It can mediate mitogenic and stress-induced activation of the transcription factors CREB1, ETV1/ER81 and NR4A1/NUR77. RSK1 (RPS6KA1) is also designated as p90RSK associated with cellular proliferation, survival and differentiation. RPS6KA1 has some phosphorylation sites including Ser380, Thr359 and Ser363 which are important for kinase activation. (PMID: 16458888, 30813401, 17259979, 10679322)

Storage

Storage:

Store at -20°C. Avoid exposure to light. Stable for one year after shipment.

Storage Buffer:

PBS with 50% glycerol, 0.05% Proclin300, 0.5% BSA, pH7.3

Aliquoting is unnecessary for -20°C storage

For technical support and original validation data for this product please contact:

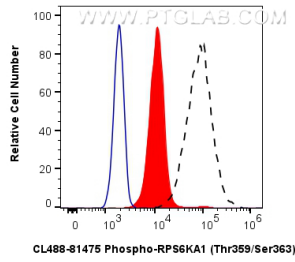
T: 4006900926

E: Proteintech-CN@ptglab.com

W: ptgcn.com

This product is exclusively available under Proteintech Group brand and is not available to purchase from any other manufacturer.

Selected Validation Data



1X10⁶ HeLa cells untreated (dashed lines) or treated with λ phosphatase which intracellularly stained with 0.25 ug Coralite® Plus 488 Phospho-Rps6ka1 (Thr359/Ser363) Recombinant Antibody (CL488-81475, Clone:3O10)(red), or 0.25 ug Coralite® Plus 488 Rabbit IgG Isotype Control RecAb (CL488-98136, Clone: 240953C9) (blue). Cells were fixed with 4% PFA and permeabilized with 90% MeOH.