

For Research Use Only

CoraLite® Plus 488-conjugated IFITM3 Recombinant antibody

Catalog Number: CL488-81135-3



Basic Information

Catalog Number: CL488-81135-3	GenBank Accession Number: BC006794	Purification Method: Protein A purification
Concentration: 1000 ug/ml	GeneID (NCBI): 10410	CloneNo.: 242056C9
Source: Rabbit	UNIPROT ID: Q01628	Recommended Dilutions: IF/ICC: 1:50-1:500
Isotype: IgG	Full Name: interferon induced transmembrane protein 3 (1-8U)	Excitation/Emission maxima wavelengths: 493 nm / 522 nm
Immunogen Catalog Number: AG2285	Calculated MW: 133 aa, 15 kDa	
	Observed MW: 15-20 kDa	

Applications

Tested Applications: IF/ICC	Positive Controls: IF/ICC : HepG2 cells,
Species Specificity: human	

Background Information

IFITM3, also named as interferon-inducible protein 1-8U, belongs to the CD225 family. It is IFN-induced antiviral protein that mediates cellular innate immunity to at least three major human pathogens, namely influenza A H1N1 virus, West Nile virus (WNV), and dengue virus, by inhibiting the early steps of replication. IFITM3 is identified as interferon-induced cellular proteins that restrict infections by retroviruses and filoviruses and of influenza virus and flaviviruses, respectively. IFITM3, the most potent antiviral IFITM, was found to inhibit an uncharacterized early infectious event after VSV endocytosis, but before primary transcription of its viral genome. IFITM proteins are viral restriction factors that can inhibit infection mediated by the influenza A virus (IAV) hemagglutinin (HA) protein. They differentially restrict the entry of a broad range of enveloped viruses, and modulate cellular tropism independently of viral receptor expression.

Storage

Storage:
Store at -20°C. Avoid exposure to light. Stable for one year after shipment.
Storage Buffer:
PBS with 50% glycerol, 0.05% Proclin300, 0.5% BSA, pH7.3
Aliquoting is unnecessary for -20°C storage

For technical support and original validation data for this product please contact:

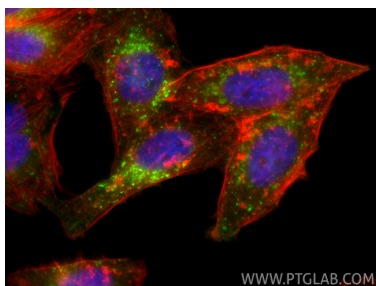
T: 4006900926

E: Proteintech-CN@ptglab.com

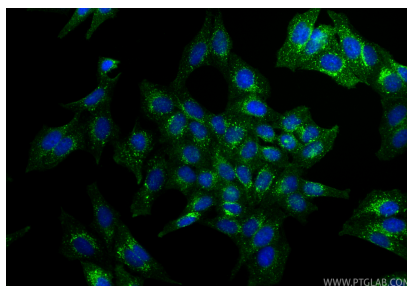
W: ptgcn.com

This product is exclusively available under Proteintech Group brand and is not available to purchase from any other manufacturer.

Selected Validation Data



Immunofluorescent analysis of (4% PFA) fixed HepG2 cells using CoraLite® Plus 488 IFITM3 antibody (CL488-81135-3, Clone: 242056C9) at dilution of 1:200, CL594-Phalloidin (red).



Immunofluorescent analysis of (4% PFA) fixed HepG2 cells using CoraLite® Plus 488 IFITM3 antibody (CL488-81135-3, Clone: 242056C9) at dilution of 1:200.