

For Research Use Only

# CoraLite® Plus 488-conjugated DDX21 Recombinant antibody



Catalog Number: **CL488-80932**

## Basic Information

Catalog Number: <b>CL488-80932</b>	GenBank Accession Number: <b>BC008071</b>	Purification Method: <b>Protein A purification</b>
Size: <b>1000 µg/ml</b>	GeneID (NCBI): <b>9188</b>	CloneNo.: <b>5E7</b>
Source: <b>Rabbit</b>	UNIPROT ID: <b>Q9NR30</b>	Recommended Dilutions: <b>IF/ICC 1:50-1:500</b>
Isotype: <b>IgG</b>	Full Name: <b>DEAD (Asp-Glu-Ala-Asp) box polypeptide 21</b>	Excitation/Emission maxima wavelengths: <b>493 nm / 522 nm</b>
Immunogen Catalog Number: <b>AG0804</b>	Calculated MW: <b>87 kDa</b>	
	Observed MW: <b>87 kDa</b>	

## Applications

Tested Applications: <b>IF/ICC</b>	Positive Controls: <b>IF/ICC : HepG2 cells,</b>
Species Specificity: <b>Human</b>	

## Background Information

DDX21 protein belongs to DEAD box protein family which is characterized by the conserved motif Asp-Glu-Ala-Asp (DEAD). As a putative RNA helicase, DDX21 unwinds double-stranded RNA, folds single-stranded RNA and is involved in process including ribosomal RNA biogenesis, RNA editing and general transcription. Interaction of DDX21 and c-Jun was reported in ribosomal RNA processing. DDX21 exists as two isoforms, molecular weight of modified isoform one is about 87 -100 kDa, and the post-modified isoform is about 75-85 kDa.

## Storage

**Storage:**  
Store at -20°C. Avoid exposure to light. Stable for one year after shipment.  
**Storage Buffer:**  
PBS with 50% Glycerol, 0.05% Proclin300, 0.5% BSA, pH 7.3.  
**Aliquoting is unnecessary for -20°C storage**

For technical support and original validation data for this product please contact:

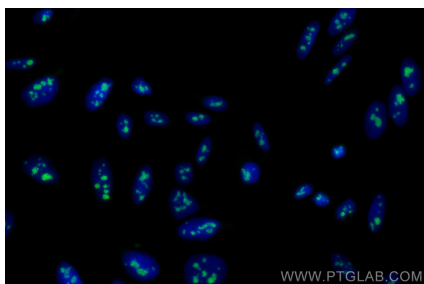
T: 4006900926

E: [Proteintech-CN@ptglab.com](mailto:Proteintech-CN@ptglab.com)

W: [ptgcn.com](http://ptgcn.com)

**This product is exclusively available under Proteintech Group brand and is not available to purchase from any other manufacturer.**

## Selected Validation Data



Immunofluorescent analysis of (4% PFA) fixed HepG2 cells using CoraLite® Plus 488 DDX1 antibody (CL488-80932, Clone: 5E7 ) at dilution of 1:200.