

CoraLite® Plus 488-conjugated p38 MAPK Recombinant antibody

Catalog Number: **CL488-80821-2**

Basic Information

Catalog Number:

CL488-80821-2

Size:

1000 µg/ml

Source:

Rabbit

Isotype:

IgG

Immunogen Catalog Number:

AG5115

GenBank Accession Number:

BC031574

GeneID (NCBI):

1432

UNIPROT ID:

Q16539

Full Name:

mitogen-activated protein kinase 14

Calculated MW:

360 aa, 41 kDa

Observed MW:

38-42 kDa

Purification Method:

Protein A purification

CloneNo.:

230263D11

Recommended Dilutions:

IF/ICC 1:50-1:500

Excitation/Emission maxima

wavelengths:

493 nm / 522 nm

Applications

Tested Applications:

IF/ICC

Species Specificity:

Human

Positive Controls:

IF/ICC : HeLa cells,

Background Information

MAPK14 (mitogen-activated protein kinase 14) is also named as SAPIK2A, p38MAPK, CSBP1, RK, p38, EXIP, Mxi2, CSBP2, PRKM14, PRKM15, CSPB1, p38ALPHA and belongs to the MAP kinase subfamily. MAPK14-signaling is a central pathway for the integration of instructive signals in dendritic cells for T(H)17 differentiation and inflammation (PMID:22231518). It plays an important role in the regulation of hematopoietic stem cell self-renewal in vitro and inhibition of MAPK14 activation with a small molecule inhibitor may represent a novel approach to promote ex vivo expansion of hematopoietic stem cell (PMID:21198398). This protein has 4 isoforms produced by alternative splicing.

Storage

Storage:

Store at -20°C. Avoid exposure to light.

Storage Buffer:

PBS with 50% Glycerol, 0.05% Proclin300, 0.5% BSA, pH 7.3.

Aliquoting is unnecessary for -20°C storage

For technical support and original validation data for this product please contact:

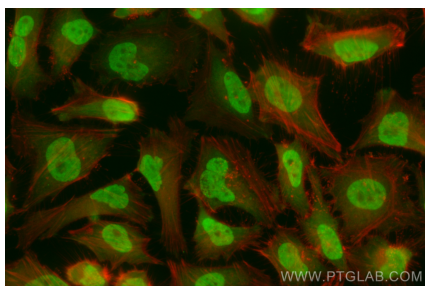
T: 4006900926

E: Proteintech-CN@ptglab.com

W: ptgcn.com

This product is exclusively available under Proteintech Group brand and is not available to purchase from any other manufacturer.

Selected Validation Data



Immunofluorescent analysis of (4% PFA) fixed HeLa cells using CoraLite® Plus 488 p38 MAPK antibody (CL488-80821-2, Clone: 230263D11) at dilution of 1:200.