

CoraLite® Plus 488-conjugated PAX8

Recombinant antibody

Catalog Number: **CL488-80756**

Basic Information

Catalog Number:

CL488-80756

Size:

1000 µg/ml

Source:

Rabbit

Isotype:

IgG

Immunogen Catalog Number:

AG0306

GenBank Accession Number:

BC001060

GeneID (NCBI):

7849

UNIPROT ID:

Q06710

Full Name:

paired box 8

Calculated MW:

48 kDa

Observed MW:

48 kDa, 58 kDa

Purification Method:

Protein A purification

CloneNo.:

6B14

Recommended Dilutions:

IF/ICC 1:200-1:800

Excitation/Emission maxima wavelengths:

493 nm / 522 nm

Applications

Tested Applications:

IF/ICC

Species Specificity:

Human, mouse

Positive Controls:

IF/ICC : SKOV-3 cells,

Background Information

PAX8 is a member of the paired box (PAX) family of transcription factors, typically containing a paired box domain and a paired-type homeodomain. It is expressed during organogenesis of the thyroid gland, kidney and Mullerian system. It is thought to regulate the expression of Wilms tumor suppressor (WT1) gene and mutations in PAX8 have been associated with Wilms tumor cells, thyroid and ovarian carcinomas. PAX8 is a useful marker in distinguishing ovarian carcinomas from mammary carcinomas (PMID: 18724243). PAX8 is expressed in a high percentage of ovarian serous, endometrioid, and clear cell carcinomas, but only rarely in primary ovarian mucinous adenocarcinoma.

Storage

Storage:

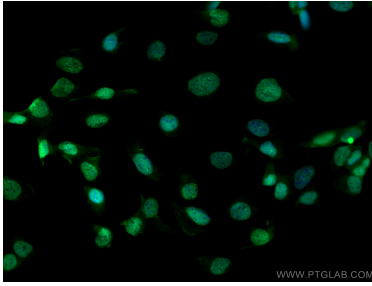
Store at -20°C. Avoid exposure to light. Stable for one year after shipment.

Storage Buffer:

PBS with 50% Glycerol, 0.05% Proclin300, 0.5% BSA, pH 7.3.

Aliquoting is unnecessary for -20°C storage

Selected Validation Data



Immunofluorescent analysis of (4% PFA) fixed SKOV-3 cells using CoraLite® Plus 488 PAX8 antibody (CL488-80756, Clone: 6B14) at dilution of 1:400.