

# CoraLite® Plus 488-conjugated Occludin Recombinant antibody

Catalog Number: **CL488-80545**

## Basic Information

**Catalog Number:**

CL488-80545

**Size:**

1000 µg/ml

**Source:**

Rabbit

**Isotype:**

IgG

**Immunogen Catalog Number:**

AG26173

**GenBank Accession Number:**

BC029886

**GeneID (NCBI):**

4950

**UNIPROT ID:**

Q16625

**Full Name:**

occludin

**Calculated MW:**

522 aa, 59 kDa

**Observed MW:**

59 kDa

**Purification Method:**

Protein A purification

**CloneNo.:**

8B2

**Recommended Dilutions:**

IF/ICC 1:50-1:500

**Excitation/Emission maxima wavelengths:**

493 nm / 522 nm

## Applications

**Tested Applications:**

IF/ICC

**Species Specificity:**

Human, Mouse, Pig

**Positive Controls:**

IF/ICC : MCF-7 cells,

## Background Information

Occludin is an integral membrane protein located at the tight junction. It is a tetraspanin protein with four transmembrane domains, intracellular N and C termini and two extracellular loops. Occludin plays a role in the formation and regulation of the tight junction paracellular permeability barrier. Occludin can exist in different isoforms, owing to modifications at the posttranscriptional and posttranslational levels, the monomeric occludin migrates as 53-65 kDa on SDS-PAGE (PMID: 22083955; 19457074).

## Storage

**Storage:**

Store at -20°C. Avoid exposure to light. Stable for one year after shipment.

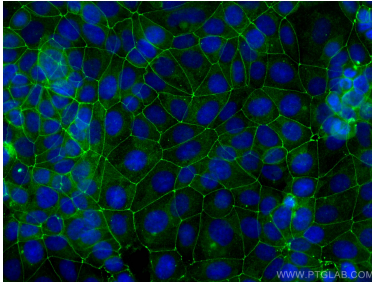
**Storage Buffer:**

PBS with 50% Glycerol, 0.05% Proclin300, 0.5% BSA, pH 7.3.

Aliquoting is unnecessary for -20°C storage

---

## Selected Validation Data



Immunofluorescent analysis of (-20°C Methanol) fixed MCF-7 cells using CoraLite® Plus 488 Occludin antibody (CL488-80545, Clone: 8B2 ) at dilution of 1:200.