

For Research Use Only

# CoraLite® Plus 488-conjugated C1QBP Recombinant antibody



Catalog Number: CL488-80490

## Basic Information

Catalog Number:

CL488-80490

Size:

1000 µg/ml

Source:

Rabbit

Isotype:

IgG

Immunogen Catalog Number:

AG19773

GenBank Accession Number:

BC013731

GeneID (NCBI):

708

UNIPROT ID:

Q07021

Full Name:

complement component 1, q  
subcomponent binding protein

Calculated MW:

282 aa, 31 kDa

Observed MW:

32 kDa

Purification Method:

Protein A purification

CloneNo.:

3K20

Recommended Dilutions:

IF 1:50-1:500

Excitation/Emission maxima  
wavelengths:

493 nm / 522 nm

## Applications

Tested Applications:

FC (Intra), IF/ICC

Species Specificity:

Human, Mouse, Rat

Positive Controls:

IF : HeLa cells,

## Background Information

C1QBP, also named as gC1q receptor (gC1qR), p32, p33, and hyaluronan-binding protein 1 (HABP1), is a protein initially copurified with splicing factor SF2 (PMID: 1830244). The protein is synthesized as a pro-protein of 282 amino acids (aa) that is post-translationally processed by removal of the initial 73 aa to a mature protein of 209 aa (PMID: 8262387). C1QBP is an evolutionary conserved and ubiquitously expressed multifunctional protein and has been reported to be a predominantly mitochondrial matrix protein involved in inflammation and infection processes, mitochondrial ribosome biogenesis, regulation of apoptosis and nuclear transcription, and pre-mRNA splicing (PMID: 28942965).

## Storage

Storage:

Store at -20°C. Avoid exposure to light.

Storage Buffer:

PBS with 50% Glycerol, 0.05% Proclin300, 0.5% BSA, pH 7.3.

Aliquoting is unnecessary for -20°C storage

For technical support and original validation data for this product please contact:

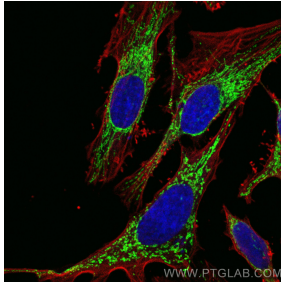
T: 4006900926

E: [Proteintech-CN@ptglab.com](mailto:Proteintech-CN@ptglab.com)

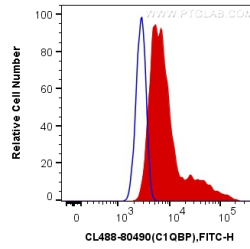
W: [ptgcn.com](http://ptgcn.com)

This product is exclusively available under Proteintech Group brand and is not available to purchase from any other manufacturer.

## Selected Validation Data



Immunofluorescent analysis of (-20°C Methanol) fixed HeLa cells using CoraLite® Plus 488 C1QBP antibody (CL488-80490, Clone: 3K20) at dilution of 1:100, CoraLite®594 Beta Actin antibody (CL594-66009, Clone: 2D4H5, red).



1X10<sup>6</sup> HeLa cells were intracellularly stained with 0.4 ug CoraLite® Plus 488 Anti-Human C1QBP (CL488-80490, Clone:3K20) (red), or 0.4 ug Control Antibody. Cells were fixed with 4% PFA and permeabilized with Flow Cytometry Perm Buffer (PF00011-C).