

# CoraLite® Plus 488-conjugated Beta Catenin Recombinant antibody

Catalog Number: CL488-80488

## Basic Information

**Catalog Number:**

CL488-80488

**Size:**

1000 µg/ml

**Source:**

Rabbit

**Isotype:**

IgG

**GenBank Accession Number:**

BC058926

**GeneID (NCBI):**

1499

**ENSEMBL Gene ID:**

ENSG00000168036

**UNIPROT ID:**

P35222

**Full Name:**catenin (cadherin-associated protein),  
beta 1, 88kDa**Calculated MW:**

781 aa, 86 kDa

**Observed MW:**

92 kDa

**Purification Method:**

Protein A purification

**CloneNo.:**

2J24

**Recommended Dilutions:**

IF/ICC 1:50-1:500

**Excitation/Emission maxima  
wavelengths:**

493 nm / 522 nm

## Applications

**Tested Applications:**

IF/ICC

**Species Specificity:**

Human, Pig, Mouse, Rat, Zebrafish

**Positive Controls:**

IF/ICC : MCF-7 cells,

## Background Information

β-Catenin, also known as CTNNB1, is an evolutionarily conserved, multifunctional intracellular protein. β-Catenin is a 92-kDa protein, originally identified in cell adherens junctions (AJs) where it functions to bridge the cytoplasmic domain of cadherins to α-catenin and the actin cytoskeleton. Besides its essential role in the AJs, β-catenin is also a key downstream component of the canonical Wnt pathway that plays diverse and critical roles in embryonic development and adult tissue homeostasis. The Wnt/β-catenin pathway is also involved in the activation of other intracellular messengers such as calcium fluxes, JNK, and SRC kinases. Deregulation of β-catenin activity is associated with multiple diseases including cancers. (PMID: 22617422; 18334222)

## Storage

**Storage:**

Store at -20°C. Avoid exposure to light. Stable for one year after shipment.

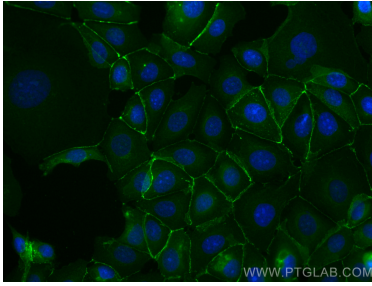
**Storage Buffer:**

PBS with 50% Glycerol, 0.05% Proclin300, 0.5% BSA, pH 7.3.

Aliquoting is unnecessary for -20°C storage

---

## Selected Validation Data



Immunofluorescent analysis of (-20°C Methanol) fixed MCF-7 cells using CoraLite® Plus 488 Beta Catenin antibody (CL488-80488, Clone: 2J24 ) at dilution of 1:200.