

For Research Use Only

# CoraLite® Plus 488-conjugated IFN Gamma Monoclonal antibody



Catalog Number: CL488-69007

## Basic Information

Catalog Number:

CL488-69007

Size:

1000 µg/ml

Source:

Mouse

Isotype:

IgG1

Immunogen Catalog Number:

HZ-1301

GenBank Accession Number:

GeneID (NCBI):

3458

ENSEMBL Gene ID:

ENSG00000111537

Full Name:

IFN gamma

Purification Method:

Protein G purification

CloneNo.:

1E10G7

Excitation/Emission maxima  
wavelengths:

493 nm / 522 nm

## Applications

Tested Applications:

FC (Intra)

Species Specificity:

Human

## Background Information

Interferon gamma (IFNG) is a soluble cytokine that is the only member of the type II class of interferons. It is secreted by Th1 cells, cytotoxic T cells and NK cells. The cytokine is associated with antiviral, immunoregulatory and anti-tumor properties and is a potent activator of macrophages. It plays crucial roles in pathogen clearance. Aberrant IFNG expression is associated with a number of autoinflammatory and autoimmune diseases. It has been identified in many studies as a biomarker for pleural tuberculosis (TB). Mutations in this gene are associated with aplastic anemia.

## Storage

Storage:

Store at -20°C. Avoid exposure to light. Stable for one year after shipment.

Storage Buffer:

PBS with 50% Glycerol, 0.05% Proclin300, 0.5% BSA, pH 7.3.

Aliquoting is unnecessary for -20°C storage

For technical support and original validation data for this product please contact:

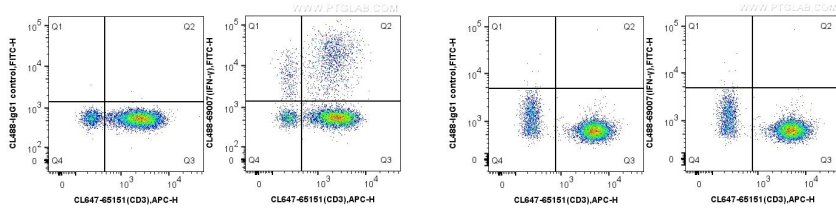
T: 4006900926

E: [Proteintech-CN@ptglab.com](mailto:Proteintech-CN@ptglab.com)

W: [ptgcn.com](http://ptgcn.com)

**This product is exclusively available under Proteintech Group brand and is not available to purchase from any other manufacturer.**

## Selected Validation Data



1X10<sup>6</sup> PMA+ionomycin+protein transport inhibitors treated for 6h human PBMCs were intracellularly stained with 0.25 ug CoraLite® Plus 488 Anti-Human IFN Gamma (CL488-69007, Clone:1E10G7), and 0.25 ug CoraLite® Plus 647 Anti-Human CD3 (UCHT1) (CL647-65151, Clone: UCHT1), and 0.25 ug Mouse IgG1 Isotype Control (CL488-66360, Clone: T1F8D3F10). Cells were fixed with 4% PFA and permeabilized with Flow Cytometry Perm Buffer (PF00011-C).

1X10<sup>6</sup> human PBMCs were intracellularly stained with 0.25 ug CoraLite® Plus 488 Anti-Human IFN Gamma (CL488-69007, Clone:1E10G7), and 0.25 ug Mouse IgG1 Isotype Control (CL488-66360, Clone: T1F8D3F10), and 0.25 ug CoraLite® Plus 647 Anti-Human CD3 (UCHT1) (CL647-65151, Clone: UCHT1). Cells were fixed with 4% PFA and permeabilized with Flow Cytometry Perm Buffer (PF00011-C).