

For Research Use Only



# CoraLite® Plus 488-conjugated Spermidine synthase Monoclonal antibody

Catalog Number: **CL488-68548**

## Basic Information

Catalog Number: CL488-68548	GenBank Accession Number: BC000309	Purification Method: Protein A purification
Size: 1000 µg/ml	GeneID (NCBI): 6723	CloneNo.: 2F4E10
Source: Mouse	UNIPROT ID: P19623	Recommended Dilutions: IF/ICC 1:50-1:500
Isotype: IgG2b	Full Name: spermidine synthase	Excitation/Emission maxima wavelengths: 493 nm / 522 nm
Immunogen Catalog Number: AG33919	Calculated MW: 302 aa, 34 kDa	
	Observed MW: 34 kDa	

## Applications

Tested Applications: IF/ICC	Positive Controls: IF/ICC : RAW 264.7 cells, HepG2 cells
Species Specificity: human, mouse	

## Background Information

Spermidine synthase is an enzyme that catalyzes the transfer of the propylamine group from S-adenosylmethionine to putrescine in the biosynthesis of spermidine. The polyamines putrescine, spermine, and spermidine are ubiquitous polycationic mediators of cell growth and differentiation. Spermidine synthases catalyze the production of the linear triamine, spermidine, from putrescine. They utilize decarboxylated S-adenosylmethionine (dc-SAM), a universal cofactor of aminopropyltransferases, as a donor of the aminopropyl moiety (PMID:31134111).

## Storage

**Storage:**  
Store at -20°C. Avoid exposure to light. Stable for one year after shipment.  
**Storage Buffer:**  
PBS with 50% Glycerol, 0.05% Proclin300, 0.5% BSA, pH 7.3.  
Aliquoting is unnecessary for -20°C storage

For technical support and original validation data for this product please contact:

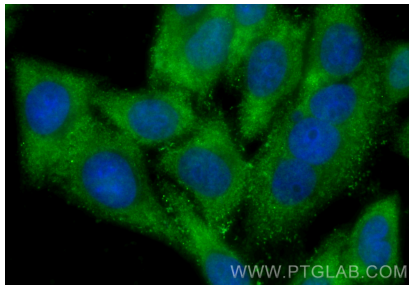
T: 4006900926

E: [Proteintech-CN@ptglab.com](mailto:Proteintech-CN@ptglab.com)

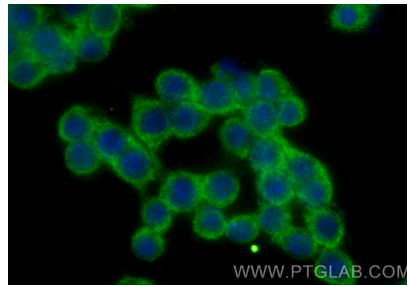
W: [ptgcn.com](http://ptgcn.com)

This product is exclusively available under Proteintech Group brand and is not available to purchase from any other manufacturer.

## Selected Validation Data



Immunofluorescent analysis of (-20°C Ethanol) fixed HepG2 cells using CoraLite® Plus 488 Spermidine synthase antibody (CL488-68548, Clone: 2F4E10 ) at dilution of 1:200.



Immunofluorescent analysis of (-20°C Ethanol) fixed RAW 264.7 cells using CoraLite® Plus 488 Spermidine synthase antibody (CL488-68548, Clone: 2F4E10 ) at dilution of 1:200.