

CoraLite® Plus 488-conjugated AMOTL2 Monoclonal antibody

Catalog Number: **CL488-68401**

Basic Information

Catalog Number:

CL488-68401

Size:

1000 µg/ml

Source:

Mouse

Isotype:

IgG1

Immunogen Catalog Number:

AG19971

GenBank Accession Number:

BC011454

GeneID (NCBI):

51421

UNIPROT ID:

Q9Y2J4

Full Name:

angiotensin like 2

Calculated MW:

779 aa, 86 kDa

Observed MW:

100 kDa

Purification Method:

Protein G purification

CloneNo.:

2C4A4

Recommended Dilutions:

IF/ICC 1:50-1:500

**Excitation/Emission maxima
wavelengths:**

493 nm / 522 nm

Applications

Tested Applications:

IF/ICC

Species Specificity:

Human

Positive Controls:

IF/ICC : A549 cells,

Background Information

Angiotensin like 2 (AMOTL2) is a member of the motin family of angiotensin binding proteins. The motin family, also known as AMOTs, consists of three members: AMOT, AMOT-like 1 (AMOTL1) and AMOTL2. Members of the motin family are a type of adaptor proteins mainly distributed in the cytomembrane, cytoplasm or nucleus, and have a higher expression in the endothelial cells of capillaries and in larger vessels of the placenta. Human Amotl2 encodes two isoforms of a molecular mass of 100 kDa and 60 kDa. (PMID: 34036399, PMID: 25080976)

Storage

Storage:

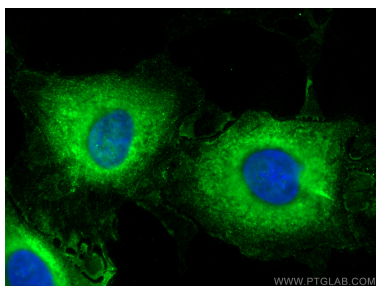
Store at -20°C. Avoid exposure to light. Stable for one year after shipment.

Storage Buffer:

PBS with 50% Glycerol, 0.05% Proclin300, 0.5% BSA, pH 7.3.

Aliquoting is unnecessary for -20°C storage

Selected Validation Data



Immunofluorescent analysis of (-20°C Methanol) fixed A549 cells using Coralite® Plus 488 AMOTL2 antibody (CL488-68401, Clone: 2C4A4) at dilution of 1:200.