

CoraLite® Plus 488-conjugated TSC2 Monoclonal antibody

Catalog Number: **CL488-68380**

Basic Information

Catalog Number:

CL488-68380

Size:

1000 µg/ml

Source:

Mouse

Isotype:

IgG1

GenBank Accession Number:

BC150300

GeneID (NCBI):

7249

UNIPROT ID:

P49815

Full Name:

tuberous sclerosis 2

Calculated MW:

1807 aa, 201 kDa

Observed MW:

200 kDa

Purification Method:

Protein G purification

CloneNo.:

1A10B2

Recommended Dilutions:

IF/ICC 1:50-1:500

**Excitation/Emission maxima
wavelengths:**

493 nm / 522 nm

Applications

Tested Applications:

IF/ICC, FC (Intra)

Species Specificity:

human, mouse

Positive Controls:

IF/ICC : HEK-293 cells,

Background Information

TSC2, also named Tuberin, plays an essential role in the cellular energy response pathway. TSC2 forms a physical and functional complex with TSC1 that can inhibit the nutrient-mediated or growth factor-stimulated phosphorylation of S6K1 and EIF4EBP1 by negatively regulating mTORC1 signaling.

Storage

Storage:

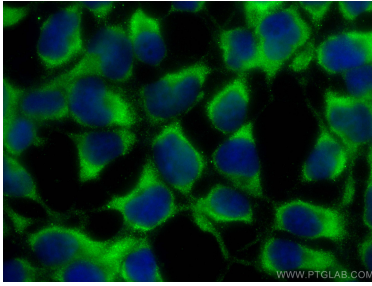
Store at -20°C. Avoid exposure to light. Stable for one year after shipment.

Storage Buffer:

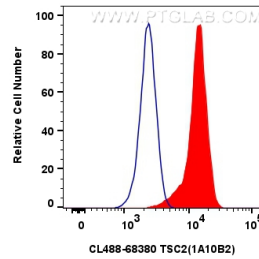
PBS with 50% Glycerol, 0.05% Proclin300, 0.5% BSA, pH 7.3.

Aliquoting is unnecessary for -20°C storage

Selected Validation Data



Immunofluorescent analysis of (-20°C Ethanol) fixed HEK-293 cells using CoraLite® Plus 488 TSC2 antibody (CL488-68380, Clone: 1A10B2) at dilution of 1:200.



1x10⁶ HEK-293 cells were intracellularly stained with 0.8 ug CoraLite® Plus 488 Anti-Human TSC2 (CL488-68380, Clone:1A10B2)(red), or 0.8 ug CoraLite® Plus 488 Mouse IgG1 Isotype Control (MOPC-21) (CL488-65124, Clone: MOPC-21) (blue). Cells were fixed with 4% PFA and permeabilized with Flow Cytometry Perm Buffer (PF00011-C).