

CoraLite® Plus 488-conjugated CCS Monoclonal antibody

Catalog Number: **CL488-68341**

Basic Information

Catalog Number:

CL488-68341

Size:

1000 µg/ml

Source:

Mouse

Isotype:

IgG2a

Immunogen Catalog Number:

AG18860

GenBank Accession Number:

BC105016

GeneID (NCBI):

9973

UNIPROT ID:

O14618

Full Name:

copper chaperone for superoxide dismutase

Calculated MW:

274 aa, 29 kDa

Observed MW:

32 kDa

Purification Method:

Protein A purification

CloneNo.:

3F5E5

Recommended Dilutions:

IF/ICC 1:50-1:500

Excitation/Emission maxima wavelengths:

493 nm / 522 nm

Applications

Tested Applications:

IF/ICC

Species Specificity:

Human, mouse, rat

Positive Controls:

IF/ICC : HepG2 cells,

Background Information

Copper chaperone for superoxide dismutase (CCS) is a soluble factor that converts copper into copper-zinc superoxide dismutase (SOD1). CCS and SOD1 interact directly in vivo and in vitro, and this interaction is mediated by homologous domains in each protein. CCS not only interacts with wild-type SOD1 but also interacts with SOD1 containing common missense mutations, resulting in FALS.

Storage

Storage:

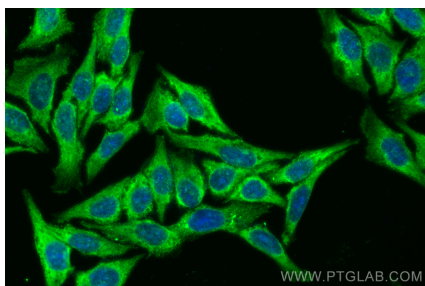
Store at -20°C. Avoid exposure to light. Stable for one year after shipment.

Storage Buffer:

PBS with 50% Glycerol, 0.05% Proclin300, 0.5% BSA, pH 7.3.

Aliquoting is unnecessary for -20°C storage

Selected Validation Data



Immunofluorescent analysis of (-20°C Methanol) fixed HepG2 cells using CoraLite® Plus 488 CCS antibody (CL488-68341, Clone: 3F5E5) at dilution of 1:200.