

For Research Use Only

# CoraLite® Plus 488-conjugated EPS8L2 Monoclonal antibody



Catalog Number: CL488-68330

## Basic Information

Catalog Number:

CL488-68330

Size:

1000 µg/ml

Source:

Mouse

Isotype:

IgG1

Immunogen Catalog Number:

AG16808

GenBank Accession Number:

BC002474

GeneID (NCBI):

64787

UNIPROT ID:

Q9H6S3

Full Name:

EPS8-like 2

Calculated MW:

715 aa, 81 kDa

Observed MW:

81 kDa

Purification Method:

Protein A purification

CloneNo.:

2E3B1

Recommended Dilutions:

IF 1:50-1:500

Excitation/Emission maxima

wavelengths:

493 nm / 522 nm

## Applications

Tested Applications:

IF/ICC

Species Specificity:

Human, Mouse, Rat

Positive Controls:

IF : HeLa cells,

## Background Information

EPS8L2 (epidermal growth factor receptor pathway substrate 8 L2), a member of the Eps8-like protein family, is a newly identified hair bundle protein that is localized at the tips of stereocilia of both cochlear and vestibular hair cells.

## Storage

Storage:

Store at -20°C. Avoid exposure to light. Stable for one year after shipment.

Storage Buffer:

PBS with 50% Glycerol, 0.05% Proclin300, 0.5% BSA, pH 7.3.

Aliquoting is unnecessary for -20°C storage

For technical support and original validation data for this product please contact:

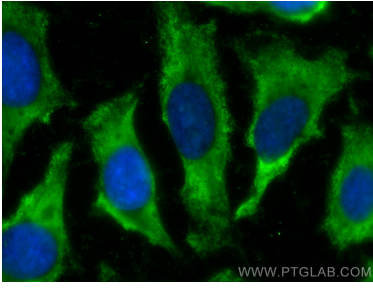
T: 4006900926

E: [Proteintech-CN@ptglab.com](mailto:Proteintech-CN@ptglab.com)

W: [ptgcn.com](http://ptgcn.com)

This product is exclusively available under Proteintech Group brand and is not available to purchase from any other manufacturer.

## Selected Validation Data



Immunofluorescent analysis of (-20°C Ethanol) fixed HeLa cells using CoraLite® Plus 488 EPS8L2 antibody (CL488-68330, Clone: 2E3B1) at dilution of 1:100.