

CoraLite[®] Plus 488-conjugated SH3GLB2 Monoclonal antibody

Catalog Number: **CL488-68325**

Basic Information

Catalog Number: CL488-68325	GenBank Accession Number: BC014635	Purification Method: Protein G purification
Size: 1000 µg/ml	GeneID (NCBI): 56904	CloneNo.: 4B1A10
Source: Mouse	UNIPROT ID: Q9NR46	Recommended Dilutions: IF/ICC 1:50-1:500
Isotype: IgG1	Full Name: SH3-domain GRB2-like endophilin B2	Excitation/Emission maxima wavelengths: 493 nm / 522 nm
Immunogen Catalog Number: AG8932	Calculated MW: 395 aa, 44 kDa	
	Observed MW: 47-50 kDa	

Applications

Tested Applications: IF/ICC	Positive Controls: IF/ICC : HeLa cells,
Species Specificity: Human, mouse, rat, pig, rabbit	

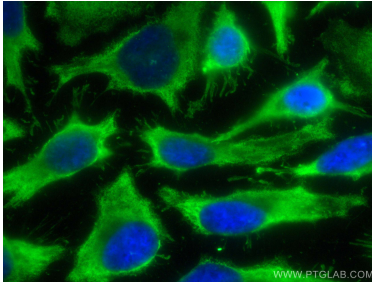
Background Information

SH3GLB2 is an endophilin-related protein family with 395-amino acid protein and contains an N-terminal domain, a central coiled-coil region, and a C-terminal SH3 domain. SH3GLB2 is expressed in many tissues, including skeletal muscle, adipocytes, brain, lung, colon, and mammary gland. SH3GLB2 was expressed in the cytoplasm of transfected HeLa cells and was excluded from nuclei (PMID: 11161816).

Storage

Storage:
Store at -20°C. Avoid exposure to light. Stable for one year after shipment.
Storage Buffer:
PBS with 50% Glycerol, 0.05% Proclin300, 0.5% BSA, pH 7.3.
Aliquoting is unnecessary for -20°C storage

Selected Validation Data



Immunofluorescent analysis of (-20°C Ethanol) fixed HeLa cells using CoraLite® Plus 488 SH3GLB2 antibody (CL488-68325, Clone: 4B1A10) at dilution of 1:200.