

For Research Use Only

# CoraLite® Plus 488-conjugated RABEP1 Monoclonal antibody



Catalog Number: CL488-68285

## Basic Information

Catalog Number:

CL488-68285

Size:

1000 µg/ml

Source:

Mouse

Isotype:

IgG1

Immunogen Catalog Number:

AG6023

GenBank Accession Number:

BC041700

GeneID (NCBI):

9135

UNIPROT ID:

Q15276

Full Name:

rabaptin, RAB GTPase binding effector protein 1

Calculated MW:

99 kDa

Observed MW:

100-105 kDa

Purification Method:

Protein G purification

CloneNo.:

1E7E11

Recommended Dilutions:

IF 1:50-1:500

Excitation/Emission maxima

wavelengths:

493 nm / 522 nm

## Applications

Tested Applications:

IF/ICC

Species Specificity:

Human, Mouse, Rat, Rabbit, Pig

Positive Controls:

IF : HeLa cells,

## Background Information

Rab GTPase-binding effector protein 1 is an enzyme that in humans is encoded by the RABEP1 gene. It belongs to rabaptin protein family. RABEP1 act as linker between gamma-adaptin, RAB4A and RAB5A. It is involved in endocytic membrane fusion and membrane trafficking of recycling endosomes. (PMID: 22841712)

## Storage

Storage:

Store at -20°C. Avoid exposure to light. Stable for one year after shipment.

Storage Buffer:

PBS with 50% Glycerol, 0.05% Proclin300, 0.5% BSA, pH 7.3.

Aliquoting is unnecessary for -20°C storage

For technical support and original validation data for this product please contact:

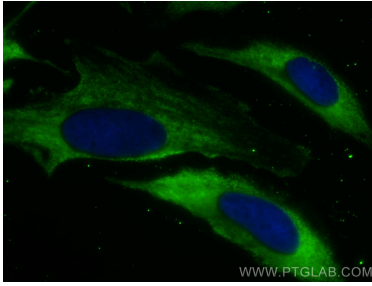
T: 4006900926

E: [Proteintech-CN@ptglab.com](mailto:Proteintech-CN@ptglab.com)

W: [ptgcn.com](http://ptgcn.com)

This product is exclusively available under Proteintech Group brand and is not available to purchase from any other manufacturer.

## Selected Validation Data



Immunofluorescent analysis of (-20°C Methanol) fixed HeLa cells using CoraLite® Plus 488 RABEP1 antibody (CL488-68285, Clone: 1E7E11) at dilution of 1:100.